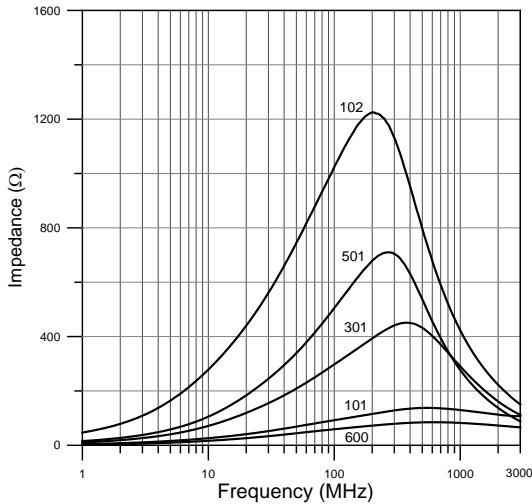


MATERIAL CHARACTERISTICS 材料特性

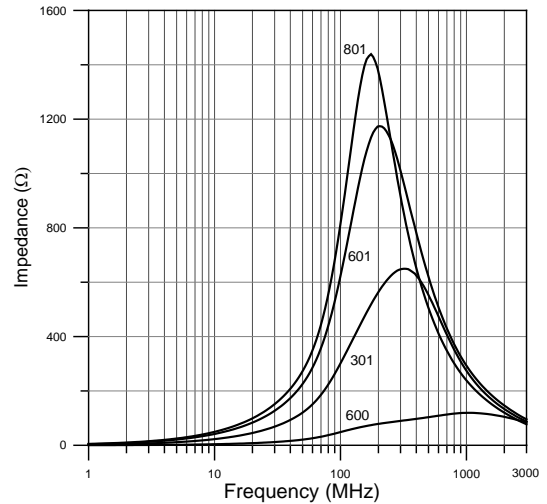
	Effective Range of Noise Suppression 有效抑制雜訊之範圍				Applications 適用產品
	1 MHz	10MHz	100MHz	1GHz	
EBMS-A		█	█		General Signal Line 一般訊號線
EBMS-B			█	█	High Speed Signal Line 高速訊號線
EBMS-K		█	█		General Signal Line Frequency higher than Material A 一般訊號線，頻率高於 A 材
EBMS-H				█	Ultra High Speed Signal Line (>100MHz) 超高速訊號線 (大於 100MHz)

TYPICAL IMPEDANCE CHARACTERISTICS 典型阻抗特性

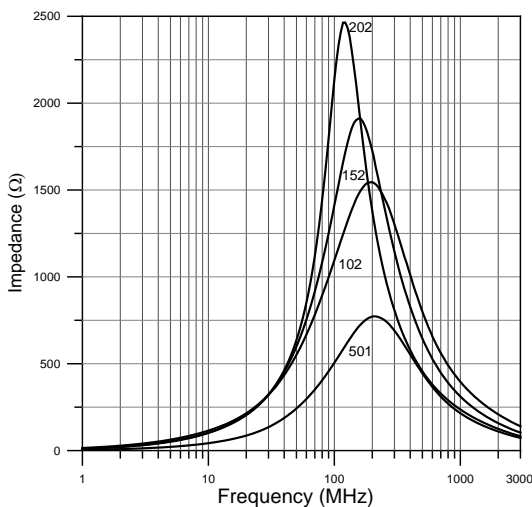
Material A (A 材)



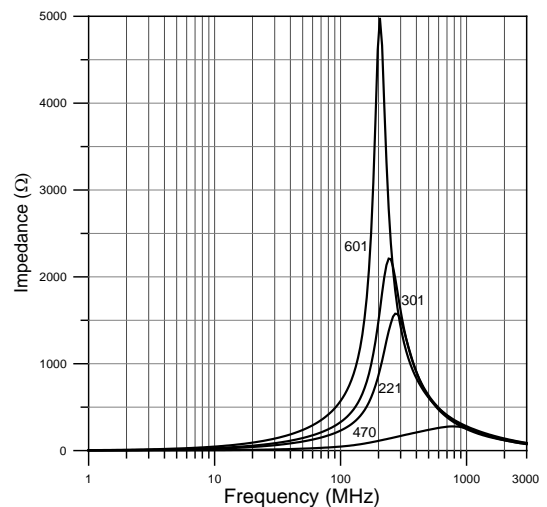
Material B (B 材)



Material K (K 材)

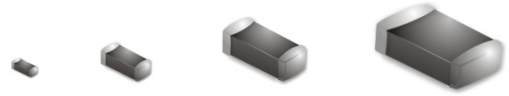


Material H (H 材)



Multilayer Ferrite Chip Bead (for Signal Line)

積層式鐵氧體晶片磁珠（訊號線用）



INTRODUCTION 產品介紹

Multilayer chip beads are SMD components that cover a wide impedance characteristic. Their impedance mainly comprises resistive part. Therefore, when a component is inserted in series with a noise conduction path, the noise content can be attenuated.

積層式晶片磁珠係表面黏著式晶片，涵蓋大範圍阻值，其阻抗主要由電阻性組成，所以當元件被安裝於一有雜訊傳導之通路，其雜訊可被衰減。

FEATURE 特色

1. These small size chips generate high impedance.
小尺寸同時產生高阻值。
2. Excellent solderability and high heat resistance for either flow or reflow soldering.
優良的焊錫性及耐熱性，適合 Flow 及 Reflow 兩種焊錫方式。
3. Monolithic structure for high reliability.
單石結構確保高信賴性。
4. Low DC resistance structure of electrode prevents wasteful electric power consumption.
低直流電阻值可避免不必要之電力消耗。

APPLICATION 適用產品

To suppress EMI/RFI and to prevent self-oscillation in electronic products. For example:

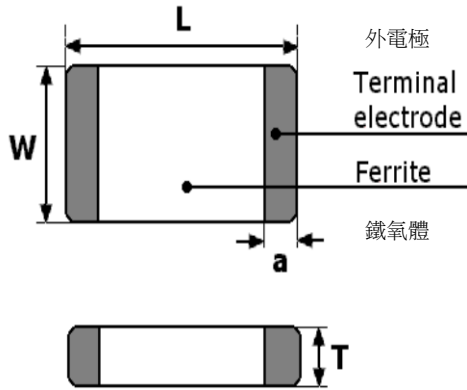
為抑制 EMI/RFI 及避免電子產品之自我振盪，例如：

1. Mother board, tablet PC, notebook, desktop computers and peripheral equipment.
主機板、平板電腦、筆記型電腦、桌上型電腦及其週邊設備。
2. DSC, DVC, LCD Television, Set Top Box.
數位相機、數位攝影機、液晶電視機、數位機上盒。
3. Mobile phone, smart phone, PND.
行動電話、智慧手機、個人導航設備。
4. Digital communication equipment.
數位通訊設備。
5. Various electronic equipment.
各式電子設備。
6. Various automotive electronics.
各式汽車設備。
7. Circuit where a stable ground is unavailable.
缺乏穩定參考地之電路。

Multilayer Ferrite Chip Bead (for Signal Line)

積層式鐵氧體晶片磁珠（訊號線用）

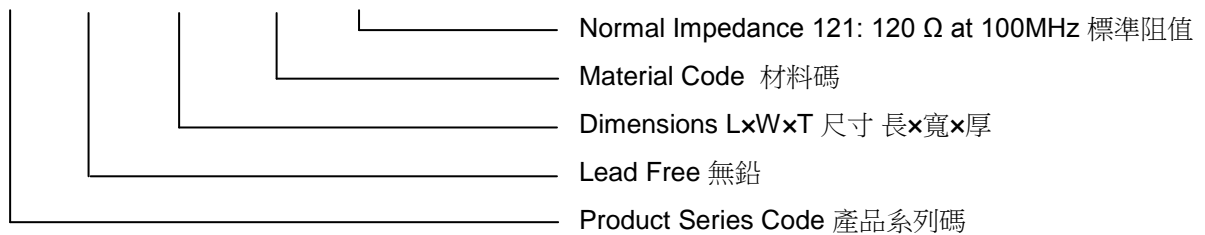
SIZE AND DIMENSION 尺寸及邊長



SIZE 尺寸	L 長 mm	W 寬 mm	T 厚 mm	a 銀寬 mm
060303 (0201)	0.6±0.03	0.3±0.03	0.3±0.03	0.1~0.2
100505 (0402)	1.0±0.05	0.5±0.05	0.5±0.05	0.1~0.3
160808 (0603)	1.6±0.15	0.8±0.15	0.8±0.15	0.2~0.6
201209 (0805)	2.0±0.2	1.25±0.2	0.9+0.15/-0.2	0.2~0.8
321611 (1206)	3.2±0.2	1.6±0.2	1.1±0.2	0.4~1.0
321616 (1206H)	3.2±0.2	1.6±0.2	1.6±0.2	0.4~1.0
322513 (1210)	3.2±0.2	2.5±0.2	1.3±0.2	0.6~1.0
451616 (1806)	4.5±0.2	1.6±0.2	1.6±0.2	0.6~1.0
453215 (1812)	4.5±0.2	3.2±0.2	1.5±0.2	0.6~1.0

PART NUMBER SYSTEM 編碼系統

EBM S 160808 A 121

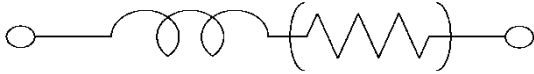


Multilayer Ferrite Chip Bead (for Signal Line)

積層式鐵氧體晶片磁珠（訊號線用）

EBMS060303 (0201) TYPE 類型

EQUIVALENT CIRCUIT DIAGRAM 等效電路圖



Electrical Characteristics 電氣特性

Part Number 產品料號	Impedance 阻抗 $\Omega \pm 25\%$ 歐姆 @ 100MHz	DC Resistance 直流電阻 Ω (Max.) 歐姆	Rated Current mA (Max.) 耐電流
EBMS060303A400	40	0.3	300
EBMS060303A500	50	0.3	300
EBMS060303A600	60	0.35	300
EBMS060303A700	70	0.35	300
EBMS060303A121	120	0.45	200
EBMS060303A151	150	0.50	200
EBMS060303A221	220	0.75	200
EBMS060303A301	300	0.90	150

* TEST EQUIPMENT: E4991A IMPEDANCE ANALYZER 量測儀器：E4991A 阻抗分析儀

Multilayer Ferrite Chip Bead (for Signal Line)

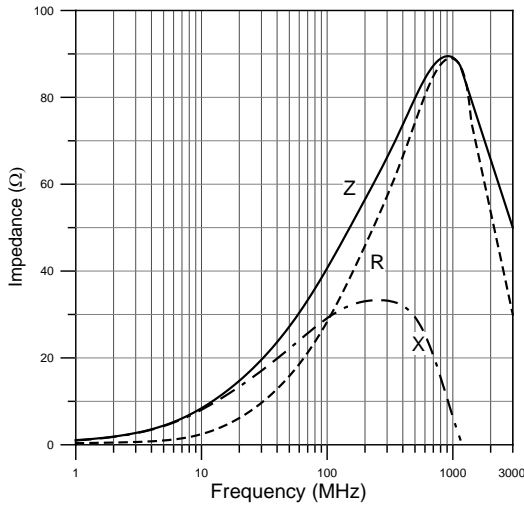
積層式鐵氧體晶片磁珠（訊號線用）

EBMS060303 (0201) TYPE 類型

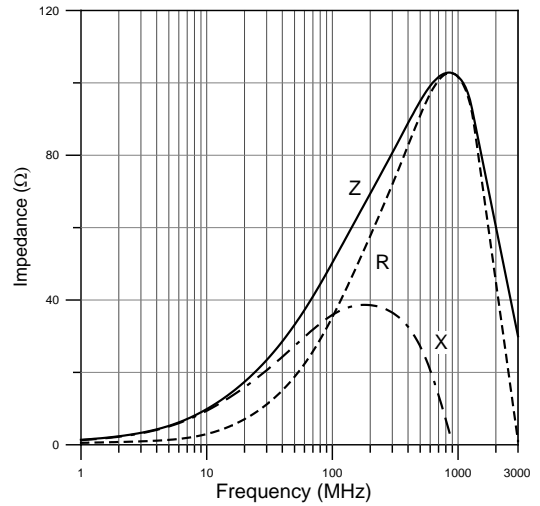
TYPICAL ELECTRICAL CHARACTERISTICS 典型電氣特性

Z, R, X vs. FREQUENCY CHARACTERISTICS 阻抗、電阻、感抗對頻率特性

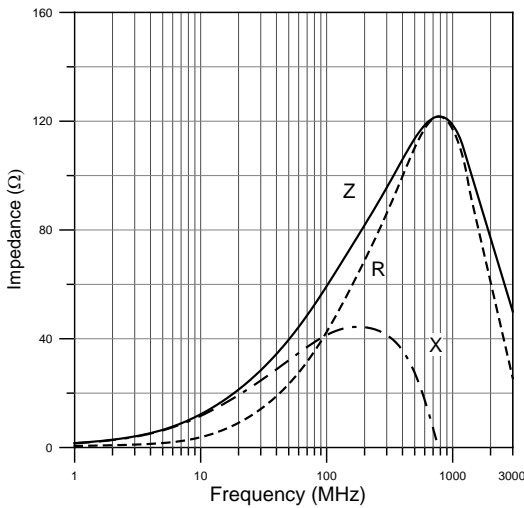
EBMS060303A400



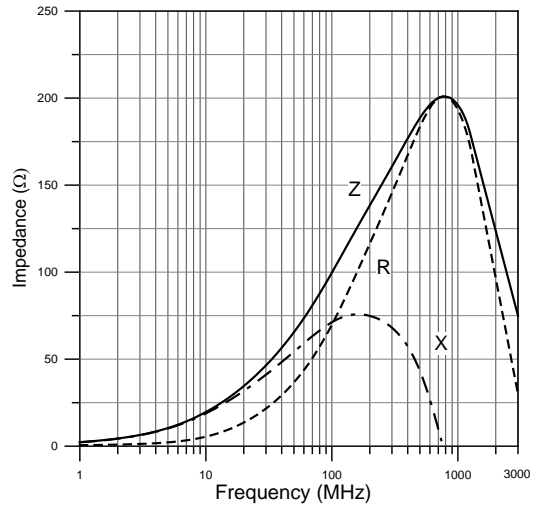
EBMS060303A500



EBMS060303A600



EBMS060303A700



Multilayer Ferrite Chip Bead (for Signal Line)

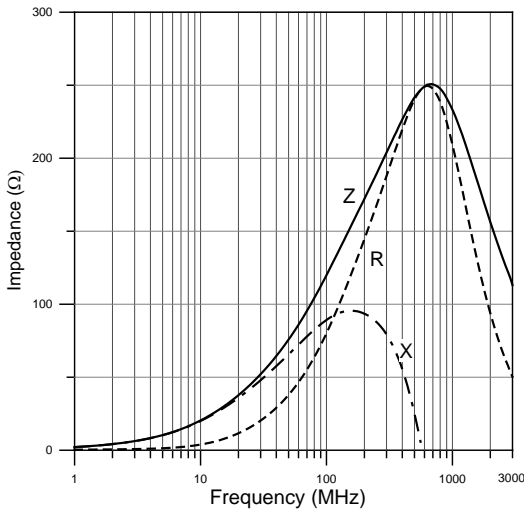
積層式鐵氧體晶片磁珠（訊號線用）

EBMS060303 (0201) TYPE 類型

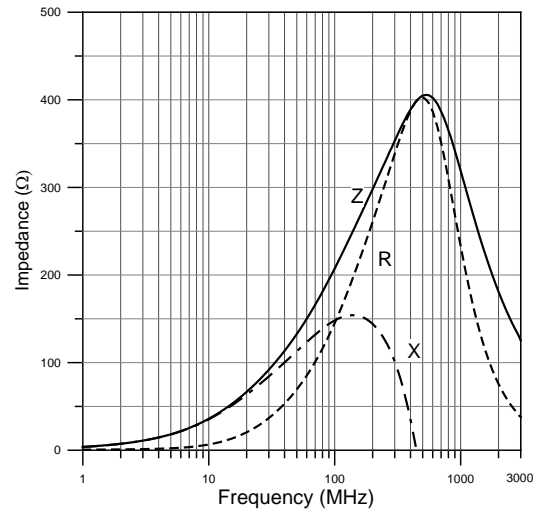
TYPICAL ELECTRICAL CHARACTERISTICS 典型電氣特性

Z, R, X vs. FREQUENCY CHARACTERISTICS 阻抗、電阻、感抗對頻率特性

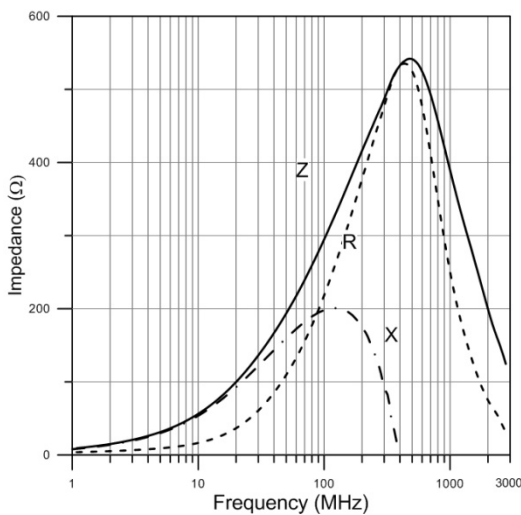
EBMS060303A121



EBMS060303A221



EBMS060303A301

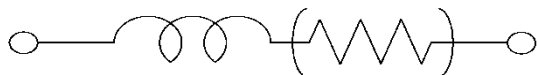


Multilayer Ferrite Chip Bead (for Signal Line)

積層式鐵氧體晶片磁珠（訊號線用）

EBMS100505 (0402) TYPE 類型

EQUIVALENT CIRCUIT DIAGRAM 等效電路圖



Electrical Characteristics 電氣特性

Part Number 產品料號	Impedance 阻抗 $\Omega \pm 25\%$ 歐姆 @ 100MHz	DC Resistance 直流電阻 Ω (Max.) 歐姆	Rated Current 耐電流 mA (Max.)
EBMS100505A100	10	0.05	500
EBMS100505A300	30	0.20	300
EBMS100505A600	60	0.40	200
EBMS100505A700	70	0.40	200
EBMS100505A800	80	0.40	200
EBMS100505A101	100	0.45	200
EBMS100505A121	120	0.50	200
EBMS100505A151	150	0.60	200
EBMS100505A181	180	0.65	100
EBMS100505A221	220	0.70	100
EBMS100505A301	300	0.75	100
EBMS100505A331	330	0.75	100
EBMS100505A471	470	0.90	100
EBMS100505A501	500	1.00	100
EBMS100505A601	600	1.10	50
EBMS100505A102	1000	1.50	50
EBMS100505B300	30	0.20	300
EBMS100505B600	60	0.40	200
EBMS100505B101	100	0.50	200
EBMS100505B121	120	0.50	200

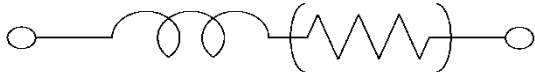
* TEST EQUIPMENT: E4991A IMPEDANCE ANALYZER 量測儀器：E4991A 阻抗分析儀

Multilayer Ferrite Chip Bead (for Signal Line)

積層式鐵氧體晶片磁珠（訊號線用）

EBMS100505 (0402) TYPE 類型

EQUIVALENT CIRCUIT DIAGRAM 等效電路圖



Electrical Characteristics 電氣特性

Part Number 產品料號	Impedance 阻抗 $\Omega \pm 25\%$ 歐姆 @ 100MHz	DC Resistance 直流電阻 Ω (Max.) 歐姆	Rated Current 耐電流 mA (Max.)
EBMS100505B221	220	0.80	100
EBMS100505B301	300	0.85	100
EBMS100505B471	470	1.00	100
EBMS100505B601	600	1.50	50
EBMS100505K300	30	0.15	300
EBMS100505K600	60	0.30	200
EBMS100505K101	100	0.50	200
EBMS100505K121	120	0.50	200
EBMS100505K221	220	0.80	100
EBMS100505K301	300	0.85	100
EBMS100505K471	470	1.00	100
EBMS100505K601	600	1.50	50
EBMS100505H100	10	0.10	500
EBMS100505H300	30	0.20	300
EBMS100505H600	60	0.40	300
EBMS100505H101	100	0.55	300
EBMS100505H121	120	0.55	300
EBMS100505H221	220	0.80	200
EBMS100505H301	300	1.00	100
EBMS100505H471	470	1.50	50
EBMS100505H601	600	2.50	50

* TEST EQUIPMENT: E4991A IMPEDANCE ANALYZER 量測儀器：E4991A 阻抗分析儀

Multilayer Ferrite Chip Bead (for Signal Line)

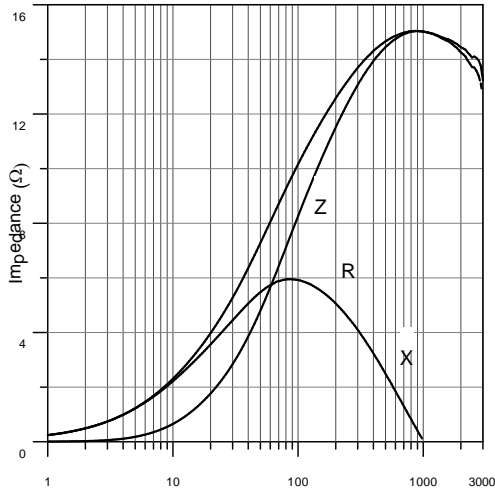
積層式鐵氧體晶片磁珠（訊號線用）

EBMS100505 (0402) TYPE 類型

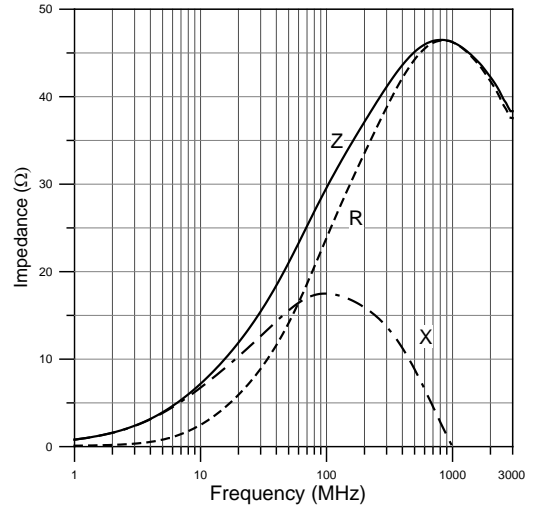
TYPICAL ELECTRICAL CHARACTERISTICS 典型電氣特性

Z, R, X vs. FREQUENCY CHARACTERISTICS 阻抗、電阻、感抗對頻率特性

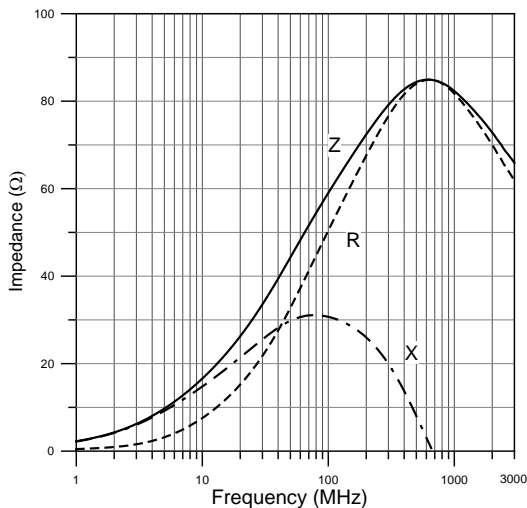
EBMS100505A100



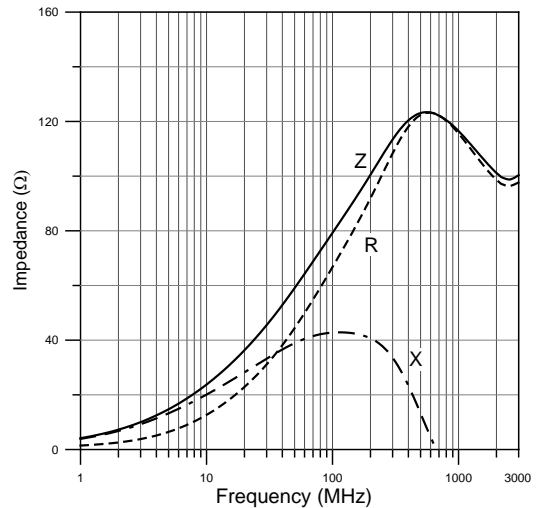
EBMS100505A300



EBMS100505A600



EBMS100505A800



Multilayer Ferrite Chip Bead (for Signal Line)

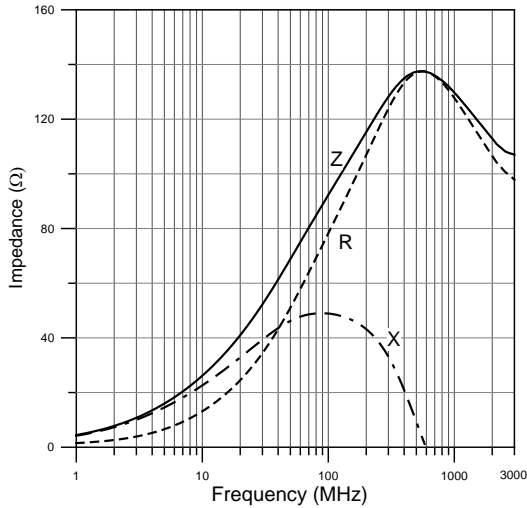
積層式鐵氧體晶片磁珠（訊號線用）

EBMS100505 (0402) TYPE 類型

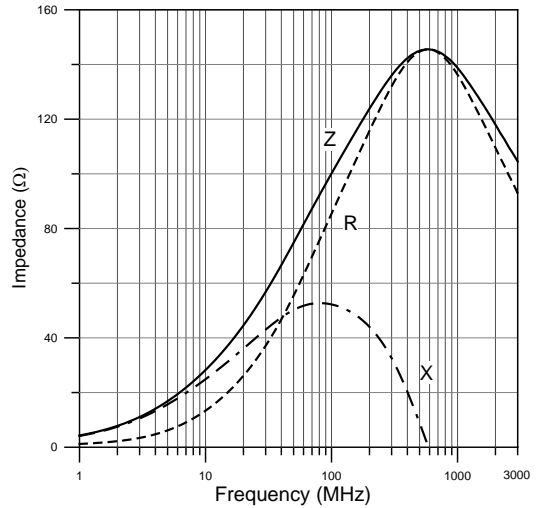
TYPICAL ELECTRICAL CHARACTERISTICS 典型電氣特性

Z, R, X vs. FREQUENCY CHARACTERISTICS 阻抗、電阻、感抗對頻率特性

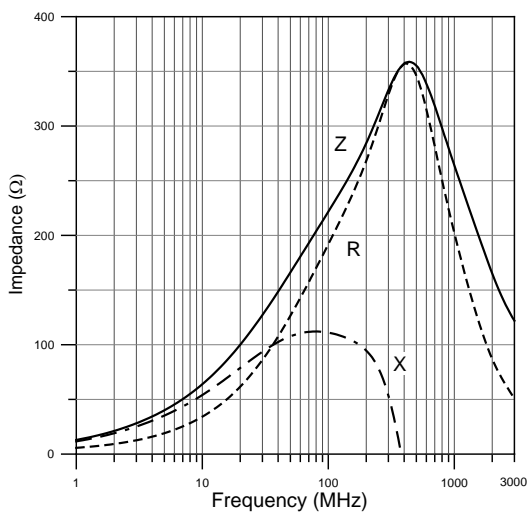
EBMS100505A101



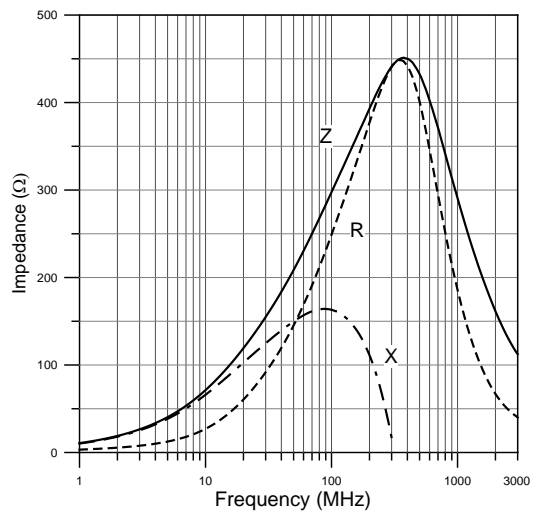
EBMS100505A121



EBMS100505A221



EBMS100505A301



Multilayer Ferrite Chip Bead (for Signal Line)

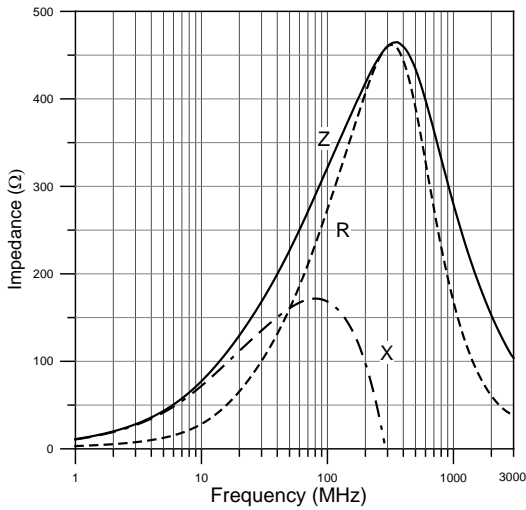
積層式鐵氧體晶片磁珠（訊號線用）

EBMS100505 (0402) TYPE 類型

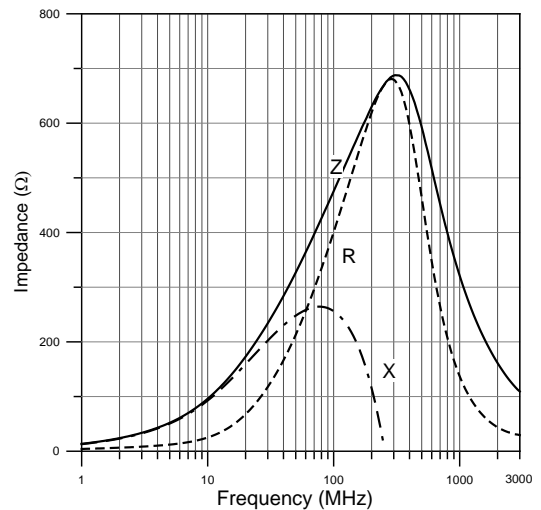
TYPICAL ELECTRICAL CHARACTERISTICS 典型電氣特性

Z, R, X vs. FREQUENCY CHARACTERISTICS 阻抗、電阻、感抗對頻率特性

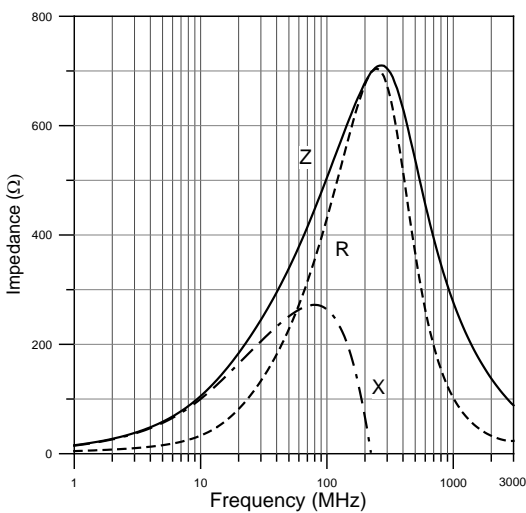
EBMS100505A331



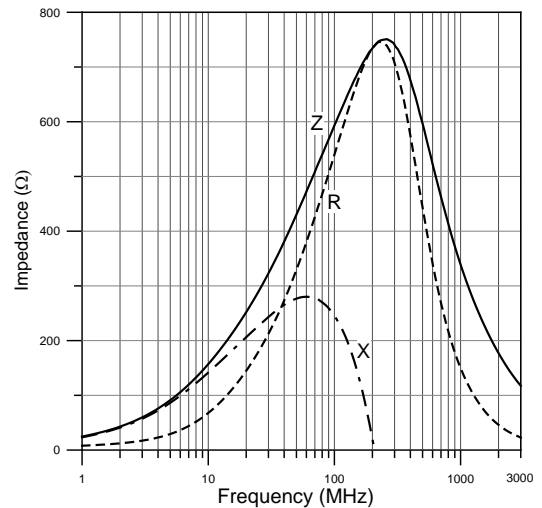
EBMS100505A471



EBMS100505A501



EBMS100505A601



Multilayer Ferrite Chip Bead (for Signal Line)

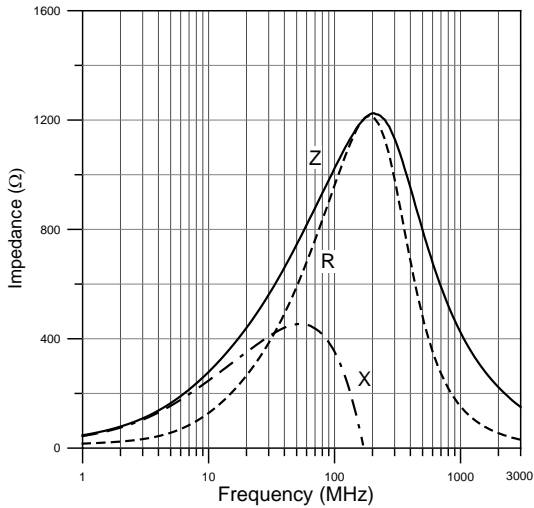
積層式鐵氧體晶片磁珠（訊號線用）

EBMS100505 (0402) TYPE 類型

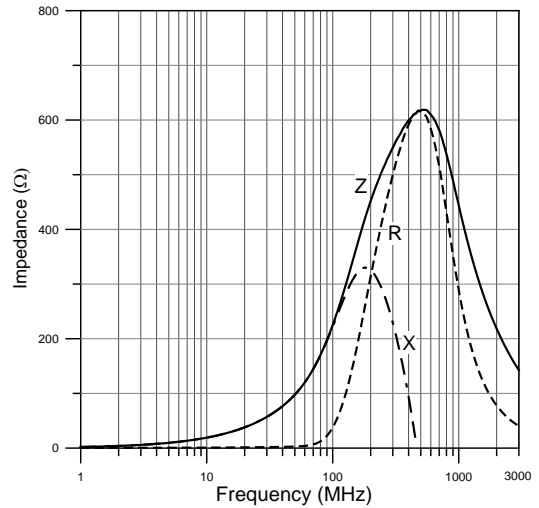
TYPICAL ELECTRICAL CHARACTERISTICS 典型電氣特性

Z, R, X vs. FREQUENCY CHARACTERISTICS 阻抗、電阻、感抗對頻率特性

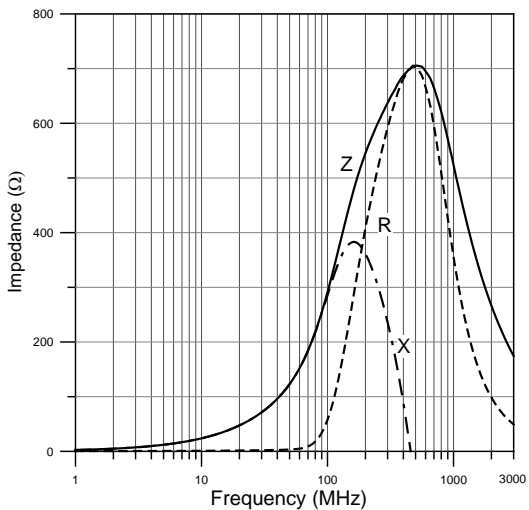
EBMS100505A102



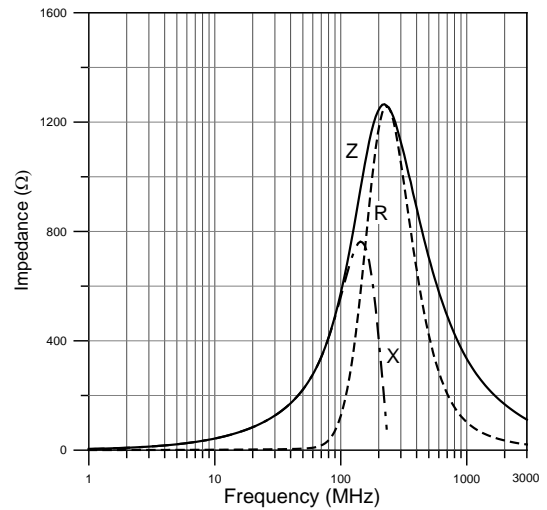
EBMS100505B221



EBMS100505B301



EBMS100505B601



Multilayer Ferrite Chip Bead (for Signal Line)

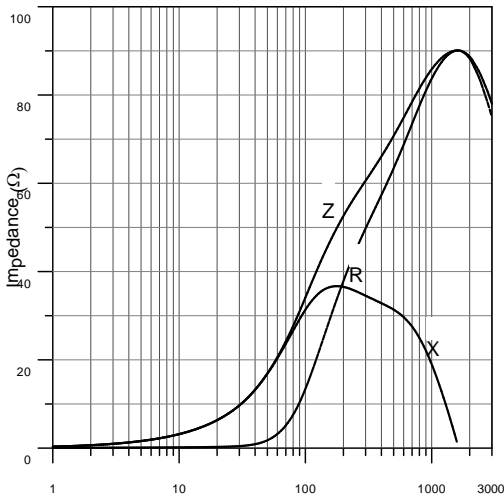
積層式鐵氧體晶片磁珠（訊號線用）

EBMS100505 (0402) TYPE 類型

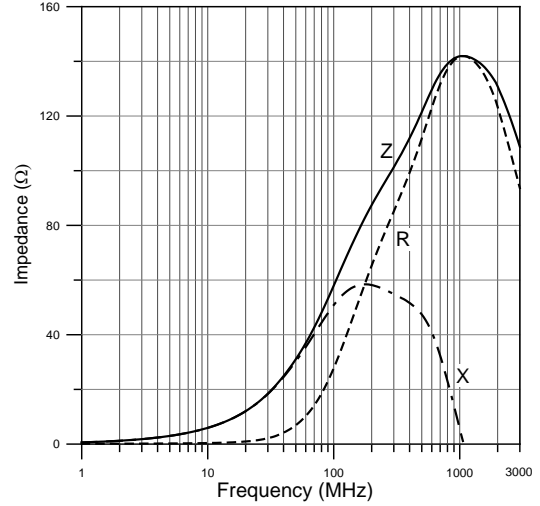
TYPICAL ELECTRICAL CHARACTERISTICS 典型電氣特性

Z, R, X vs. FREQUENCY CHARACTERISTICS 阻抗、電阻、感抗對頻率特性

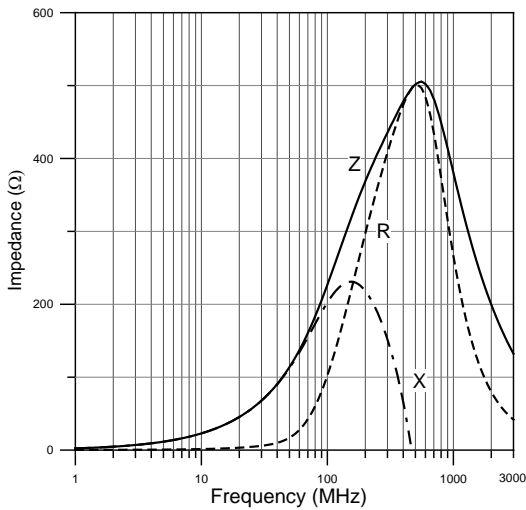
EBMS100505K300



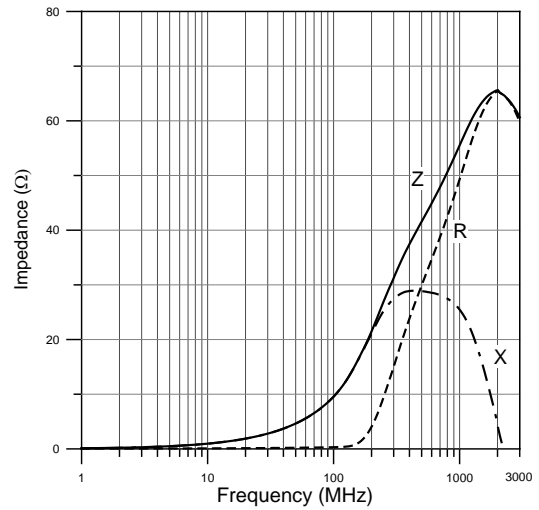
EBMS100505K600



EBMS100505K221



EBMS100505H100



Multilayer Ferrite Chip Bead (for Signal Line)

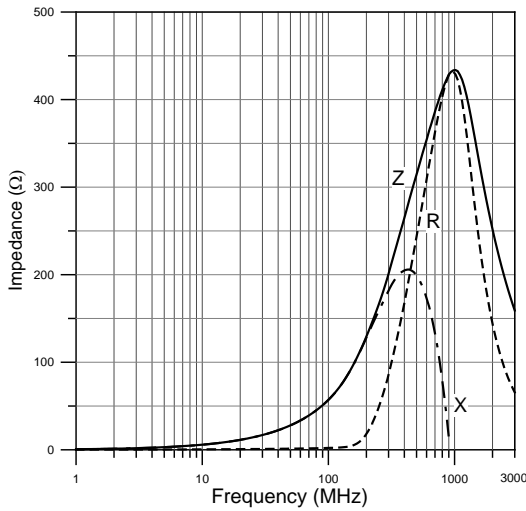
積層式鐵氧體晶片磁珠（訊號線用）

EBMS100505 (0402) TYPE 類型

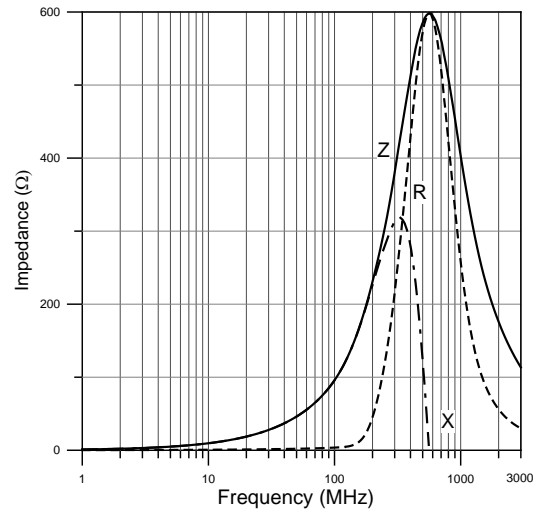
TYPICAL ELECTRICAL CHARACTERISTICS 典型電氣特性

Z, R, X vs. FREQUENCY CHARACTERISTICS 阻抗、電阻、感抗對頻率特性

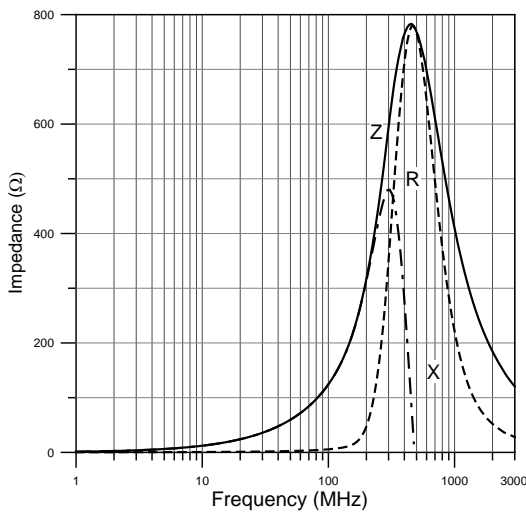
EBMS100505H600



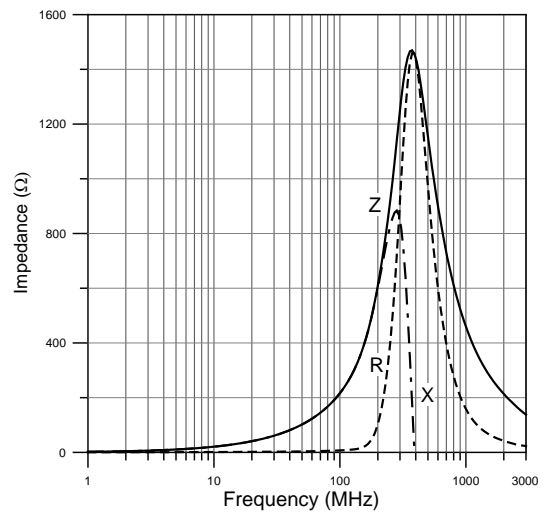
EBMS100505H101



EBMS100505H121



EBMS100505H221

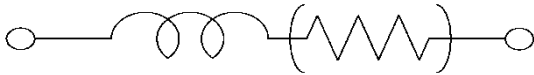


Multilayer Ferrite Chip Bead (for Signal Line)

積層式鐵氧體晶片磁珠（訊號線用）

EBMS160808 (0603) TYPE 類型

EQUIVALENT CIRCUIT DIAGRAM 等效電路圖



Electrical Characteristics 電氣特性

Part Number 產品料號	Impedance 阻抗 $\Omega \pm 25\%$ 歐姆 @ 100MHz	DC Resistance 直流電阻 Ω (Max.) 歐姆	Rated Current 耐電流 mA (Max.)
EBMS160808A190	19	0.10	400
EBMS160808A310	31	0.10	400
EBMS160808A520	52	0.15	400
EBMS160808A600	60	0.15	400
EBMS160808A800	80	0.15	400
EBMS160808A101	100	0.15	400
EBMS160808A121	120	0.15	400
EBMS160808A151	150	0.15	400
EBMS160808A181	180	0.20	400
EBMS160808A201	200	0.20	400
EBMS160808A221	220	0.20	400
EBMS160808A301	300	0.30	400
EBMS160808A401	400	0.30	400
EBMS160808A451	450	0.30	400
EBMS160808A601	600	0.35	400
EBMS160808A751	750	0.35	400
EBMS160808A102	1000	0.55	300
EBMS160808A152	1500	0.60	200
EBMS160808B050	5	0.08	700
EBMS160808B300	30	0.20	500
EBMS160808B600	60	0.25	450
EBMS160808B101	100	0.30	450

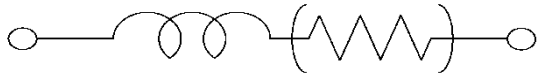
* TEST EQUIPMENT: E4991A IMPEDANCE ANALYZER 量測儀器：E4991A 阻抗分析儀

Multilayer Ferrite Chip Bead (for Signal Line)

積層式鐵氧體晶片磁珠（訊號線用）

EBMS160808 (0603) TYPE 類型

EQUIVALENT CIRCUIT DIAGRAM 等效電路圖



Electrical Characteristics 電氣特性

Part Number 產品料號	Impedance 阻抗 $\Omega \pm 25\%$ 歐姆 @ 100MHz	DC Resistance 直流電阻 Ω (Max.) 歐姆	Rated Current 耐電流 mA (Max.)
EBMS160808B121	120	0.30	450
EBMS160808B151	150	0.35	450
EBMS160808B221	220	0.35	450
EBMS160808B301	300	0.35	450
EBMS160808B471	470	0.35	450
EBMS160808B601	600	0.4	450
EBMS160808B102	1000	0.6	300
EBMS160808K471	470	0.55	200
EBMS160808K601	600	0.65	200
EBMS160808K751	750	0.7	200
EBMS160808K102	1000	0.85	100
EBMS160808K152	1500	0.90	100
EBMS160808K202	2000	1.00	100
EBMS160808K252	2500	1.00	50
EBMS160808H070	7	0.10	900
EBMS160808H100	10	0.10	900
EBMS160808H680	68	0.1	700
EBMS160808H121	120	0.30	300
EBMS160808H301	300	0.35	300
EBMS160808H601	600	0.65	300
EBMS160808H102	1000	1.10	50

* TEST EQUIPMENT: E4991A IMPEDANCE ANALYZER 量測儀器：E4991A 阻抗分析儀

Multilayer Ferrite Chip Bead (for Signal Line)

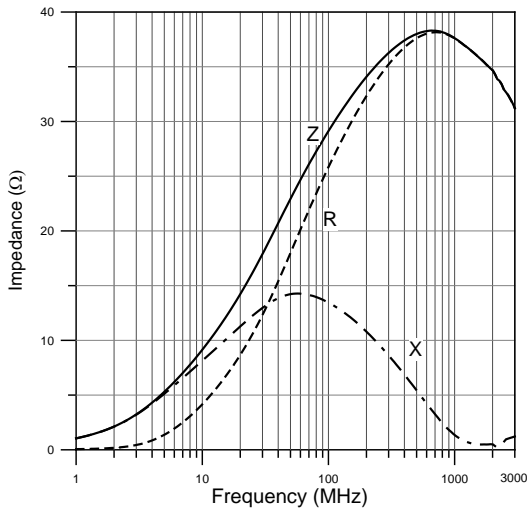
積層式鐵氧體晶片磁珠（訊號線用）

EBMS160808 (0603) TYPE 類型

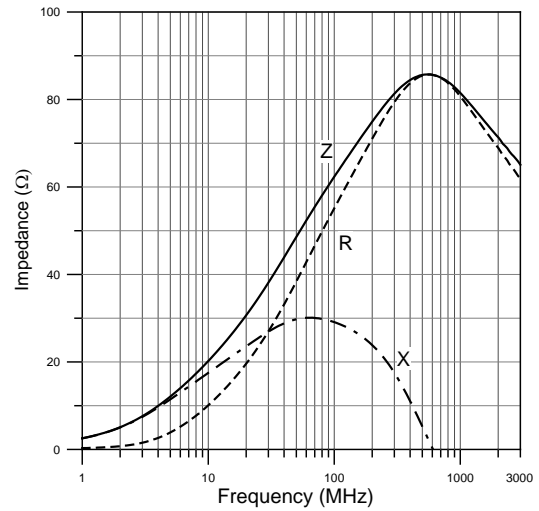
TYPICAL ELECTRICAL CHARACTERISTICS 典型電氣特性

Z, R, X vs. FREQUENCY CHARACTERISTICS 阻抗、電阻、感抗對頻率特性

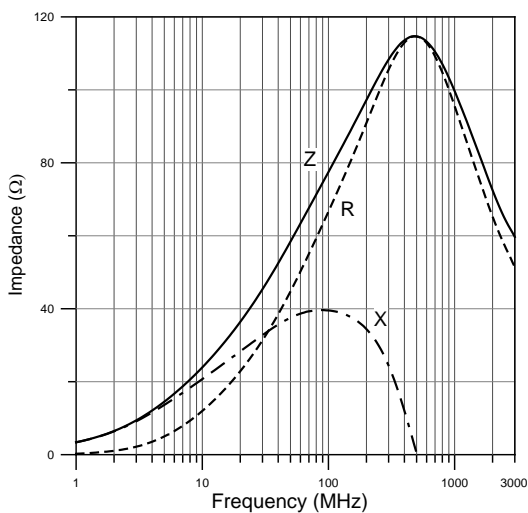
EBMS160808A310



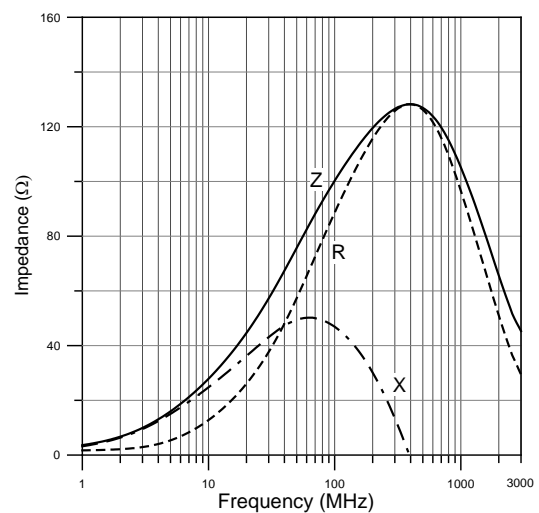
EBMS160808A600



EBMS160808A800



EBMS160808A101



Multilayer Ferrite Chip Bead (for Signal Line)

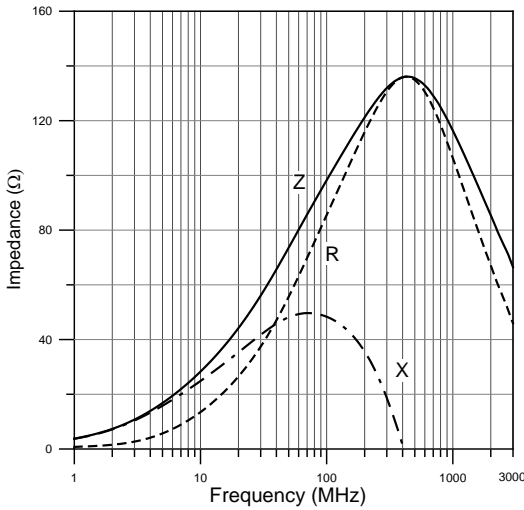
積層式鐵氧體晶片磁珠（訊號線用）

EBMS160808 (0603) TYPE 類型

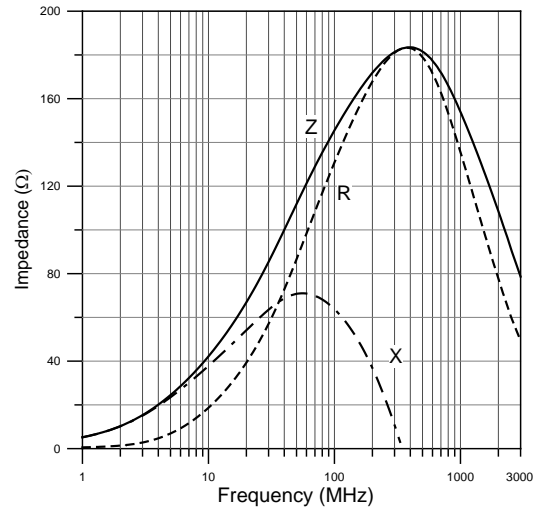
TYPICAL ELECTRICAL CHARACTERISTICS 典型電氣特性

Z, R, X vs. FREQUENCY CHARACTERISTICS 阻抗、電阻、感抗對頻率特性

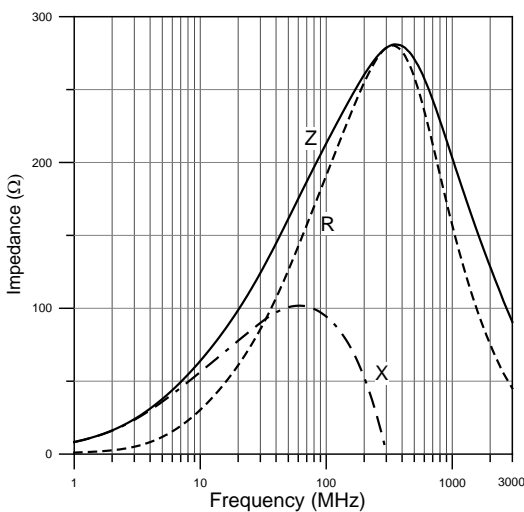
EBMS160808A121



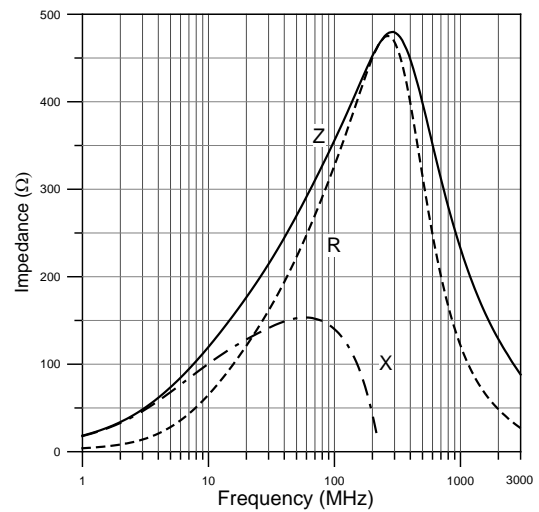
EBMS160808A151



EBMS160808A221



EBMS160808A301



Multilayer Ferrite Chip Bead (for Signal Line)

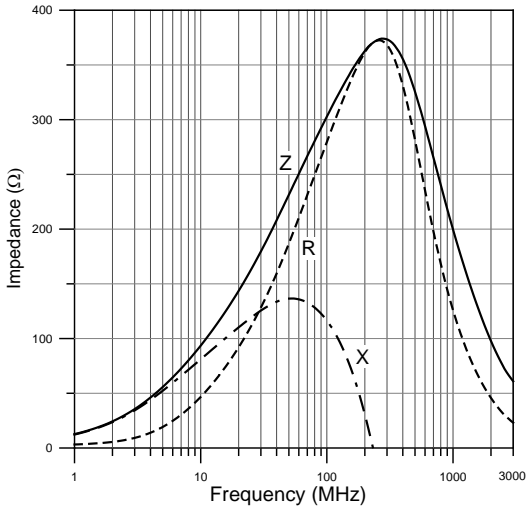
積層式鐵氧體晶片磁珠（訊號線用）

EBMS160808 (0603) TYPE 類型

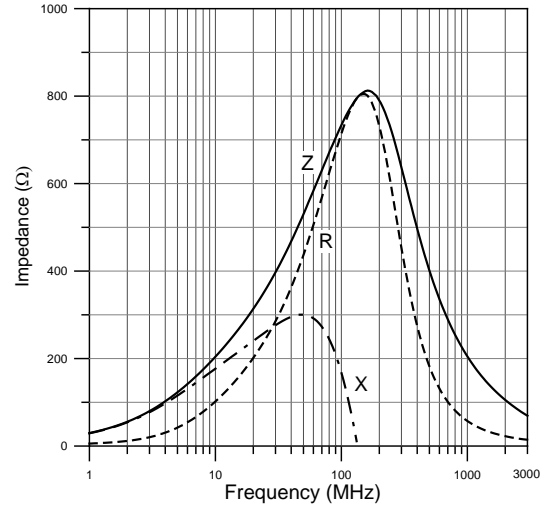
TYPICAL ELECTRICAL CHARACTERISTICS 典型電氣特性

Z, R, X vs. FREQUENCY CHARACTERISTICS 阻抗、電阻、感抗對頻率特性

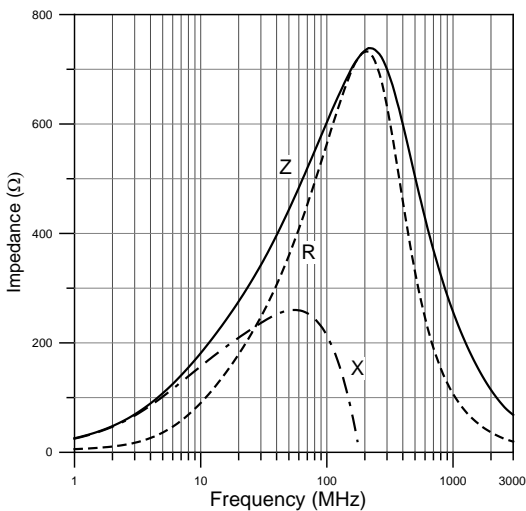
EBMS160808A401



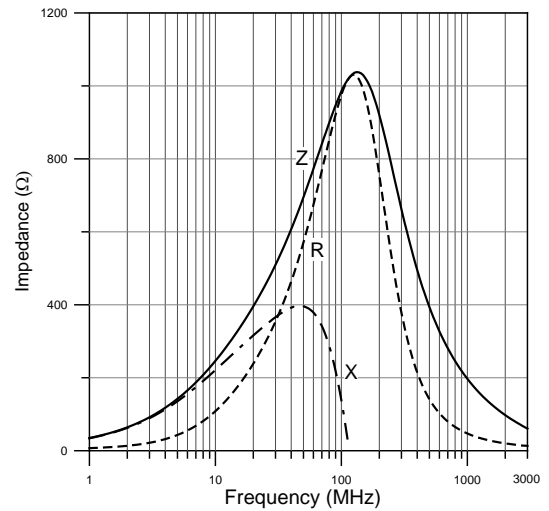
EBMS160808A601



EBMS160808A751



EBMS160808A102



Multilayer Ferrite Chip Bead (for Signal Line)

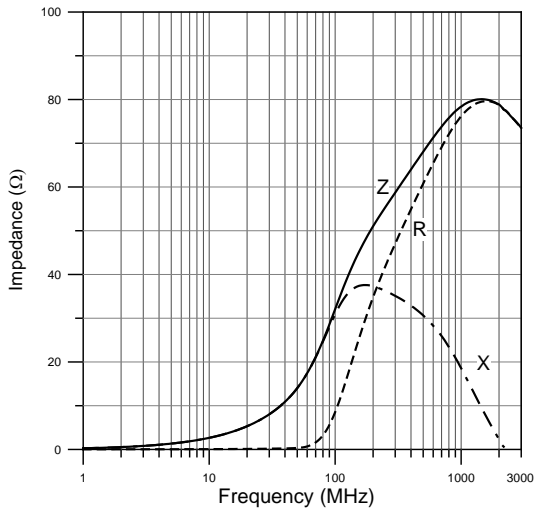
積層式鐵氧體晶片磁珠（訊號線用）

EBMS160808 (0603) TYPE 類型

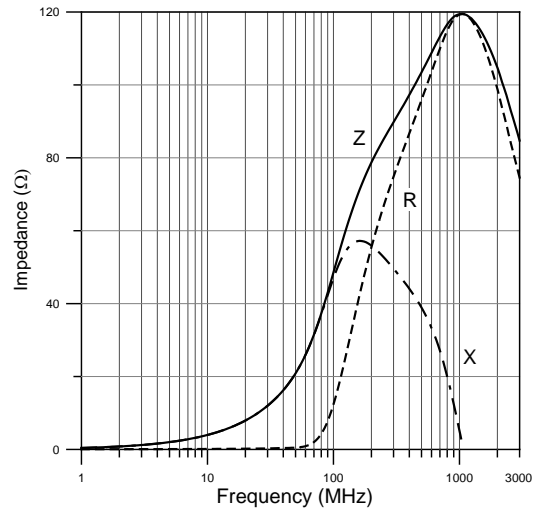
TYPICAL ELECTRICAL CHARACTERISTICS 典型電氣特性

Z, R, X vs. FREQUENCY CHARACTERISTICS 阻抗、電阻、感抗對頻率特性

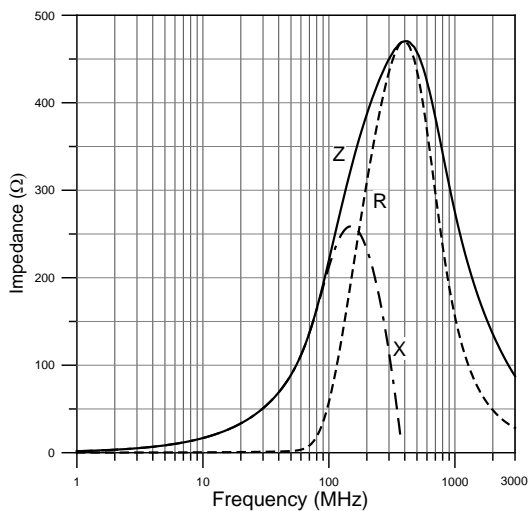
EBMS160808B300



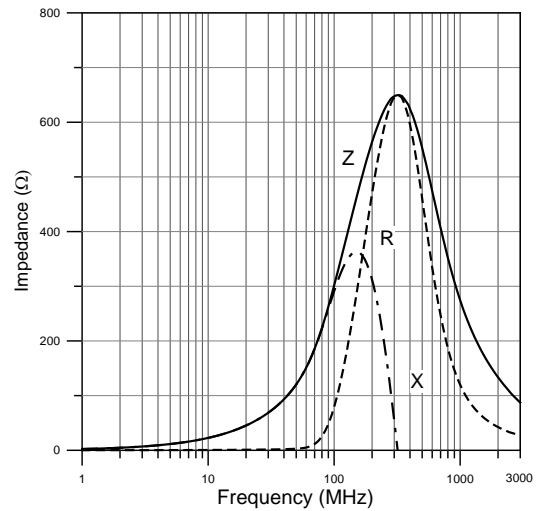
EBMS160808B600



EBMS160808B221



EBMS160808B301



Multilayer Ferrite Chip Bead (for Signal Line)

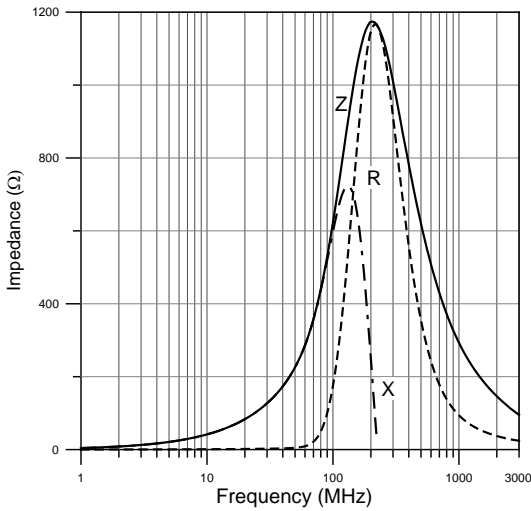
積層式鐵氧體晶片磁珠（訊號線用）

EBMS160808 (0603) TYPE 類型

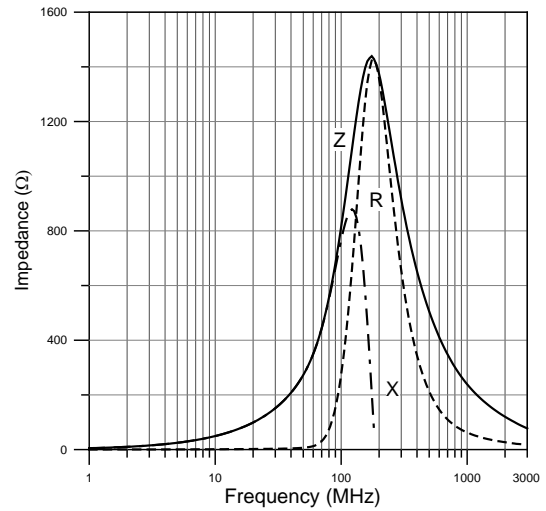
TYPICAL ELECTRICAL CHARACTERISTICS 典型電氣特性

Z, R, X vs. FREQUENCY CHARACTERISTICS 阻抗、電阻、感抗對頻率特性

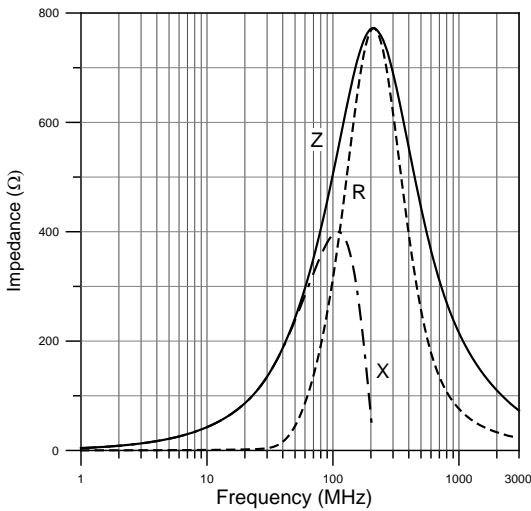
EBMS160808B601



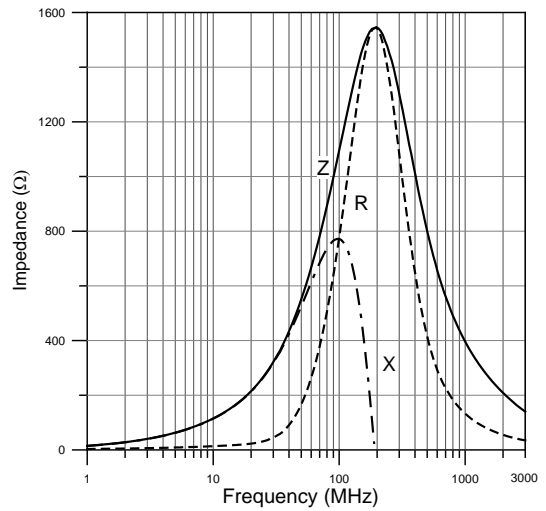
EBMS160808B102



EBMS160808K601



EBMS160808K102



Multilayer Ferrite Chip Bead (for Signal Line)

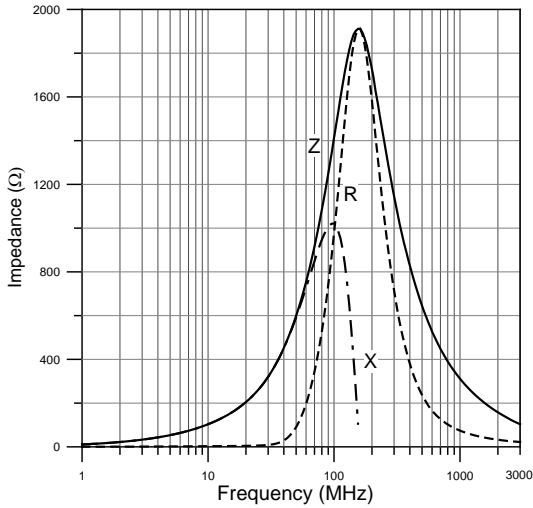
積層式鐵氧體晶片磁珠（訊號線用）

EBMS160808 (0603) TYPE 類型

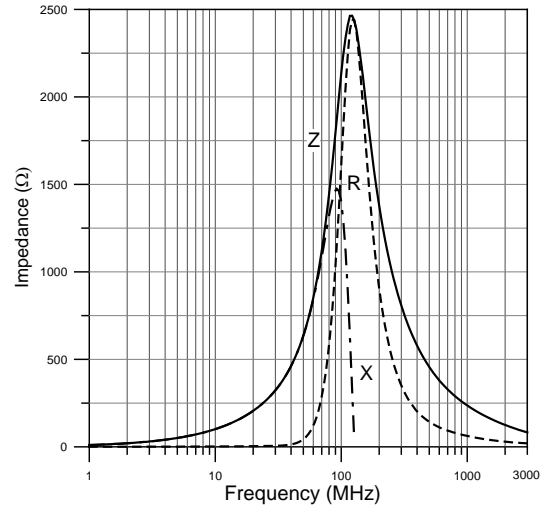
TYPICAL ELECTRICAL CHARACTERISTICS 典型電氣特性

Z, R, X vs. FREQUENCY CHARACTERISTICS 阻抗、電阻、感抗對頻率特性

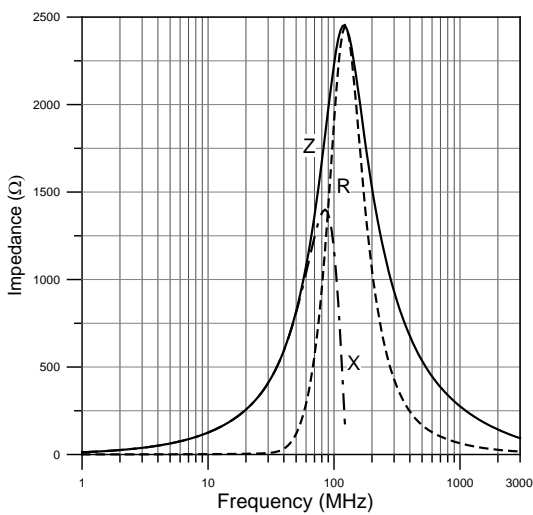
EBMS160808K152



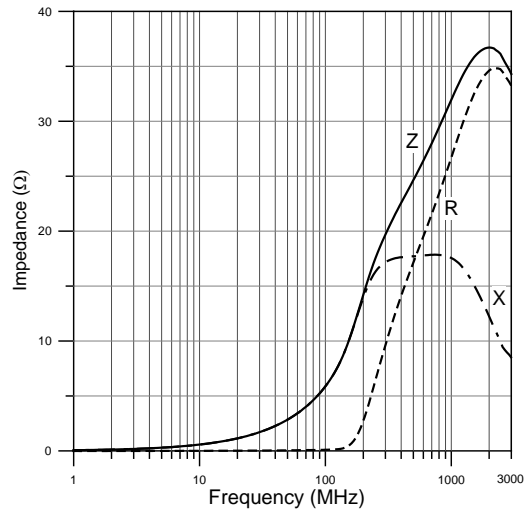
EBMS160808K202



EBMS160808K252



EBMS160808H070



Multilayer Ferrite Chip Bead (for Signal Line)

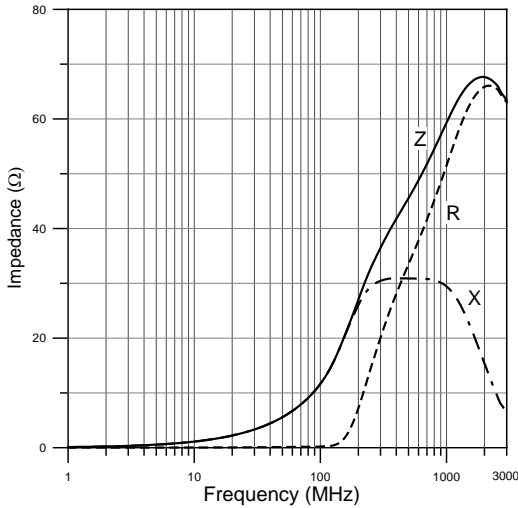
積層式鐵氧體晶片磁珠（訊號線用）

EBMS160808 (0603) TYPE 類型

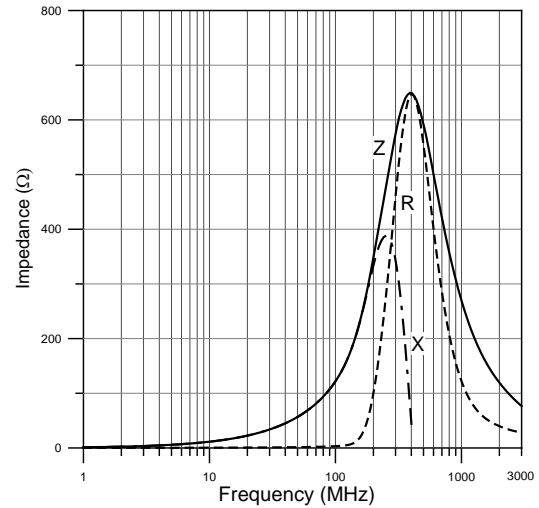
TYPICAL ELECTRICAL CHARACTERISTICS 典型電氣特性

Z, R, X vs. FREQUENCY CHARACTERISTICS 阻抗、電阻、感抗對頻率特性

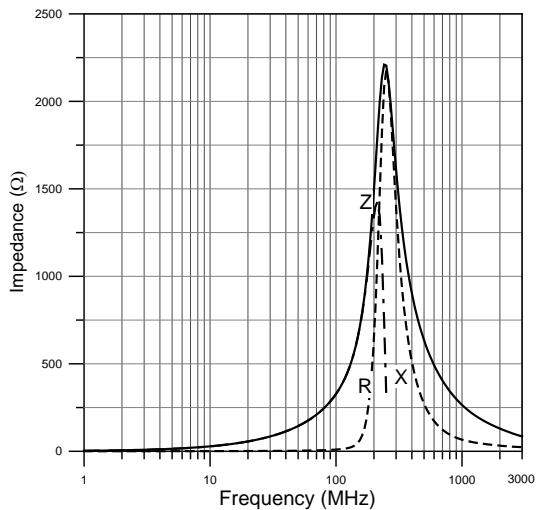
EBMS160808H100



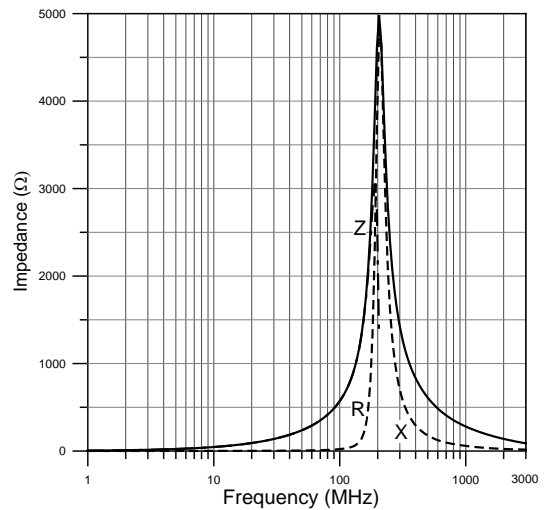
EBMS160808H121



EBMS160808H301



EBMS160808H601

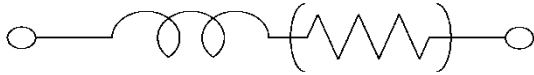


Multilayer Ferrite Chip Bead (for Signal Line)

積層式鐵氧體晶片磁珠（訊號線用）

EBMS201209 (0805) TYPE 類型

EQUIVALENT CIRCUIT DIAGRAM 等效電路圖



Electrical Characteristics 電氣特性

Part Number 產品料號	Impedance 阻抗 $\Omega \pm 25\%$ 歐姆 @ 100MHz	DC Resistance 直流電阻 Ω (Max.) 歐姆	Rated Current 耐電流 mA (Max.)
EBMS201209A170	17	0.10	300
EBMS201209A260	26	0.10	300
EBMS201209A310	31	0.10	300
EBMS201209A520	52	0.15	300
EBMS201209A600	60	0.15	300
EBMS201209A800	80	0.15	300
EBMS201209A101	100	0.20	300
EBMS201209A121	120	0.20	300
EBMS201209A151	150	0.20	300
EBMS201209A221	220	0.25	300
EBMS201209A301	300	0.25	300
EBMS201209A401	400	0.30	300
EBMS201209A531	530	0.35	300
EBMS201209A601	600	0.35	300
EBMS201209A102	1000	0.45	300
EBMS201209A152	1500	0.70	300
EBMS201209B050	5	0.07	500
EBMS201209B300	30	0.15	300
EBMS201209B600	60	0.15	300
EBMS201209B750	75	0.20	300
EBMS201209B101	100	0.20	300
EBMS201209B121	120	0.20	300
EBMS201209B221	220	0.25	200
EBMS201209B301	300	0.25	200

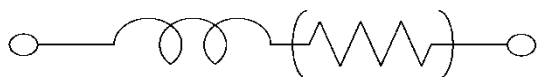
* TEST EQUIPMENT: E4991A IMPEDANCE ANALYZER 量測儀器：E4991A 阻抗分析儀

Multilayer Ferrite Chip Bead (for Signal Line)

積層式鐵氧體晶片磁珠（訊號線用）

EBMS201209 (0805) TYPE 類型

EQUIVALENT CIRCUIT DIAGRAM 等效電路圖



Electrical Characteristics 電氣特性

Part Number 產品料號	Impedance 阻抗 $\Omega \pm 25\%$ 歐姆 @ 100MHz	DC Resistance 直流電阻 Ω (Max.) 歐姆	Rated Current 耐電流 mA (Max.)
EBMS201209B601	600	0.25	200
EBMS201209B751	750	0.30	200
EBMS201209B102	1000	0.30	200
EBMS201209B152	1500	0.35	200
EBMS201209B182	1800	0.40	200
EBMS201209B202	2000	0.40	200
EBMS201209B222	2200	0.50	200
EBMS201209B252	2500	0.60	200
EBMS201209B272	2700	0.60	200
EBMS201209K800	80	0.30	300
EBMS201209K601	600	0.35	200
EBMS201209K751	750	0.35	200
EBMS201209K102	1000	0.40	200
EBMS201209K122	1200	0.40	200
EBMS201209K152	1500	0.45	200
EBMS201209K202	2000	0.60	200
EBMS201209K252	2500	0.70	200
EBMS201209H050	5	0.07	500
EBMS201209H070	7	0.07	500
EBMS201209H121	120	0.35	300
EBMS201209H601	600	0.65	200

* TEST EQUIPMENT: E4991A IMPEDANCE ANALYZER 量測儀器：E4991A 阻抗分析儀

Multilayer Ferrite Chip Bead (for Signal Line)

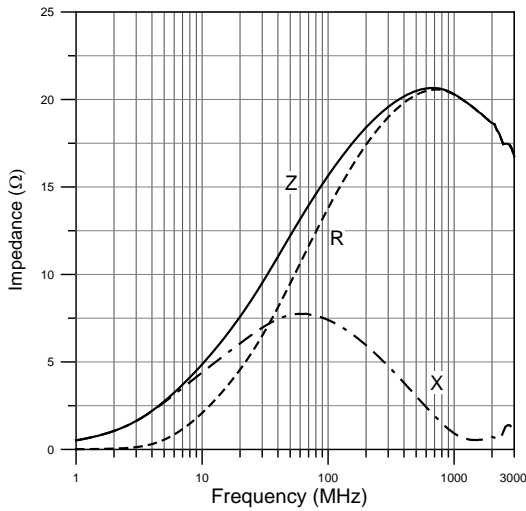
積層式鐵氧體晶片磁珠（訊號線用）

EBMS201209 (0805) TYPE 類型

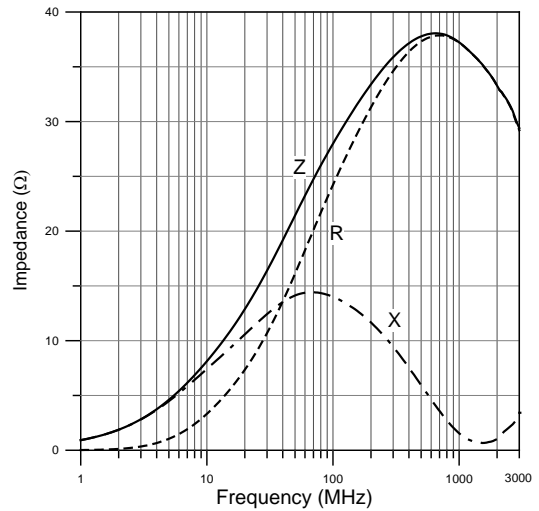
TYPICAL ELECTRICAL CHARACTERISTICS 典型電氣特性

Z, R, X vs. FREQUENCY CHARACTERISTICS 阻抗、電阻、感抗對頻率特性

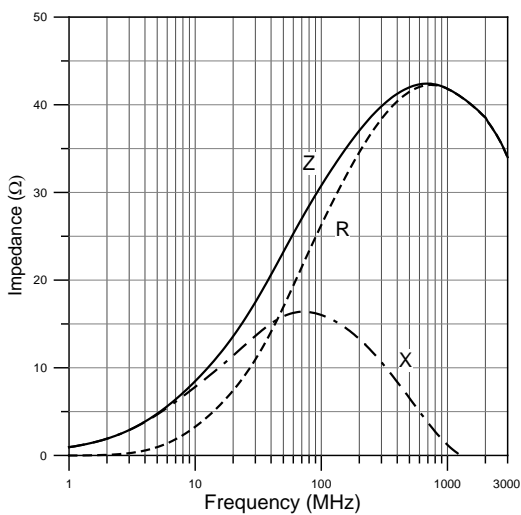
EBMS201209A170



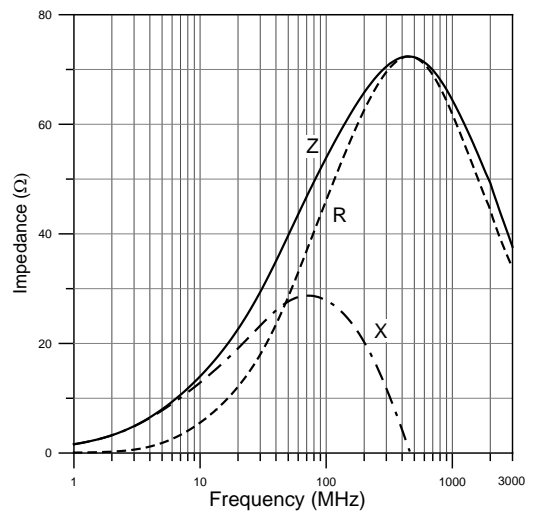
EBMS201209A260



EBMS201209A310



EBMS201209A520



Multilayer Ferrite Chip Bead (for Signal Line)

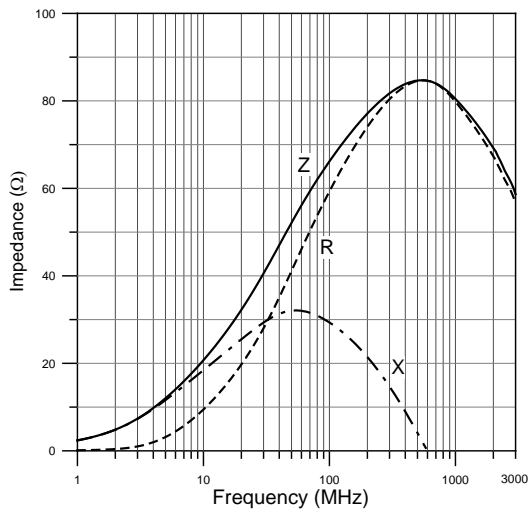
積層式鐵氧體晶片磁珠（訊號線用）

EBMS201209 (0805) TYPE 類型

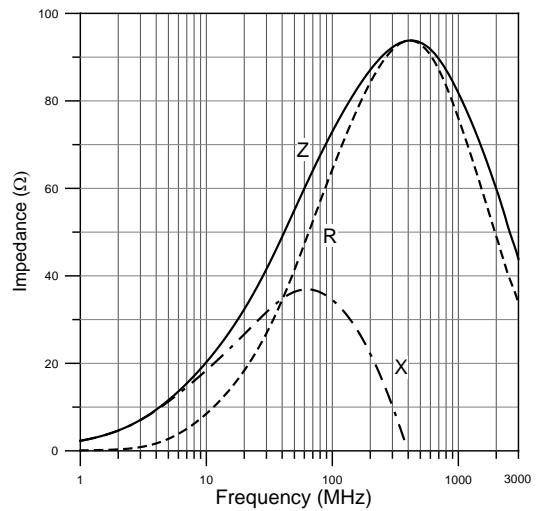
TYPICAL ELECTRICAL CHARACTERISTICS 典型電氣特性

Z, R, X vs. FREQUENCY CHARACTERISTICS 阻抗、電阻、感抗對頻率特性

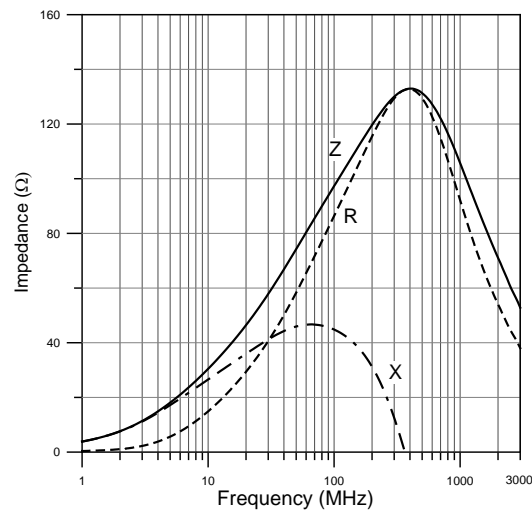
EBMS201209A600



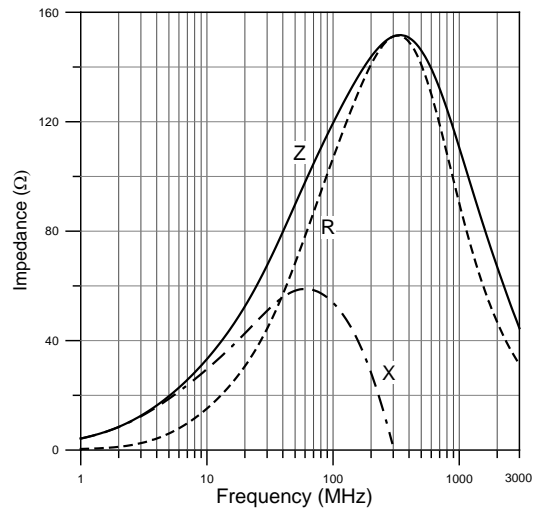
EBMS201209A800



EBMS201209A101



EBMS201209A121



Multilayer Ferrite Chip Bead (for Signal Line)

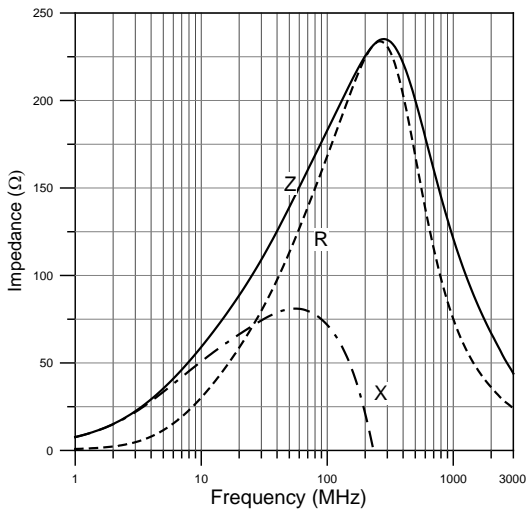
積層式鐵氧體晶片磁珠（訊號線用）

EBMS201209 (0805) TYPE 類型

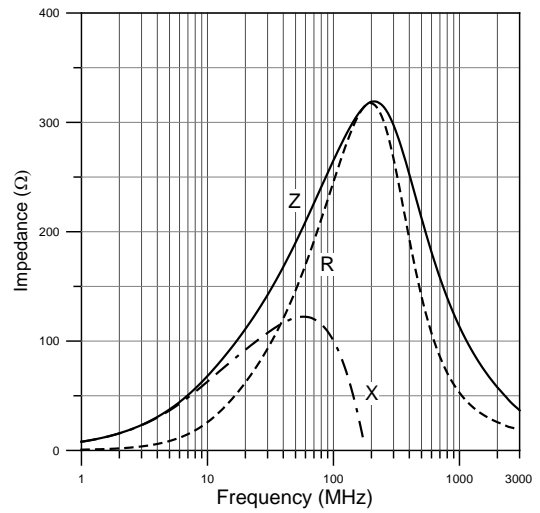
TYPICAL ELECTRICAL CHARACTERISTICS 典型電氣特性

Z, R, X vs. FREQUENCY CHARACTERISTICS 阻抗、電阻、感抗對頻率特性

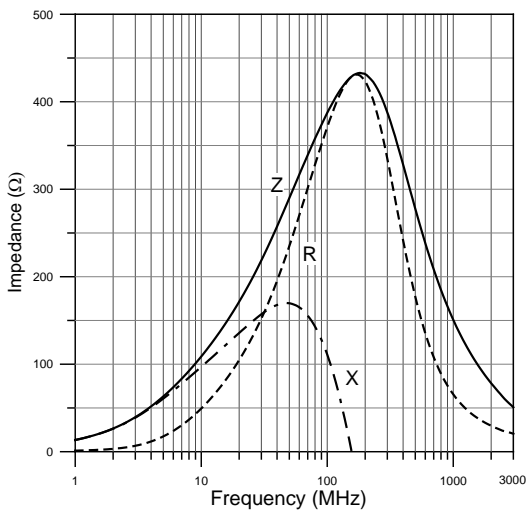
EBMS201209A221



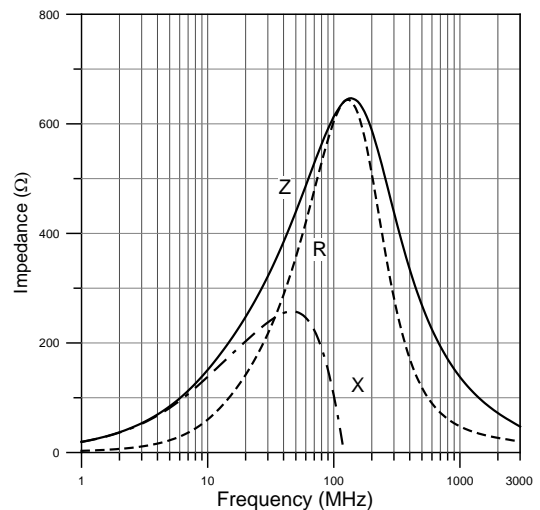
EBMS201209A301



EBMS201209A401



EBMS201209A601



Multilayer Ferrite Chip Bead (for Signal Line)

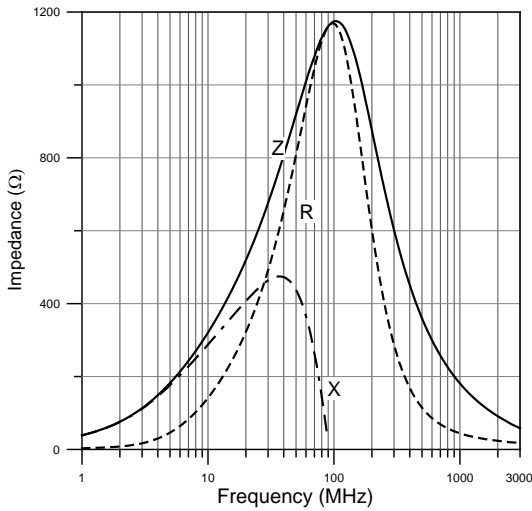
積層式鐵氧體晶片磁珠（訊號線用）

EBMS201209 (0805) TYPE 類型

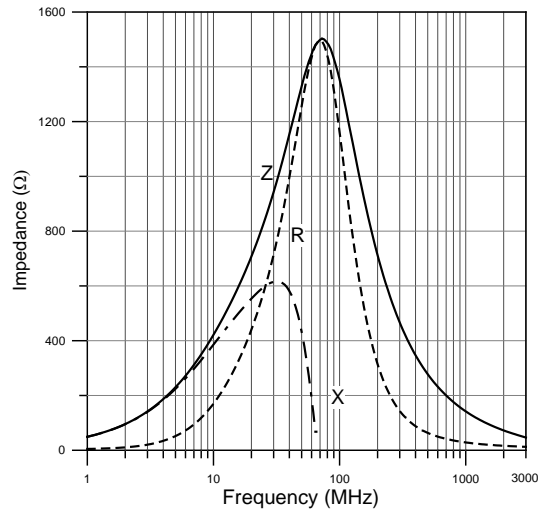
TYPICAL ELECTRICAL CHARACTERISTICS 典型電氣特性

Z, R, X vs. FREQUENCY CHARACTERISTICS 阻抗、電阻、感抗對頻率特性

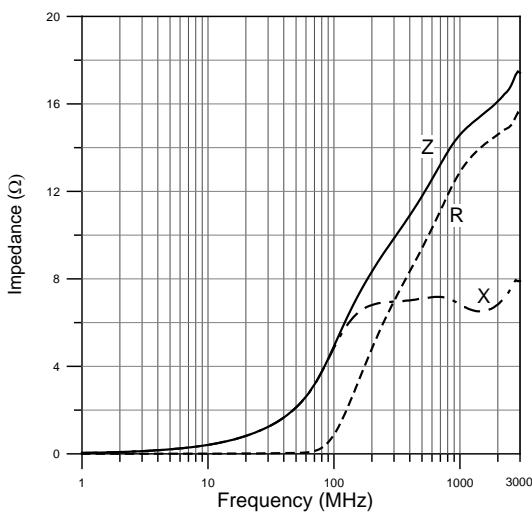
EBMS201209A102



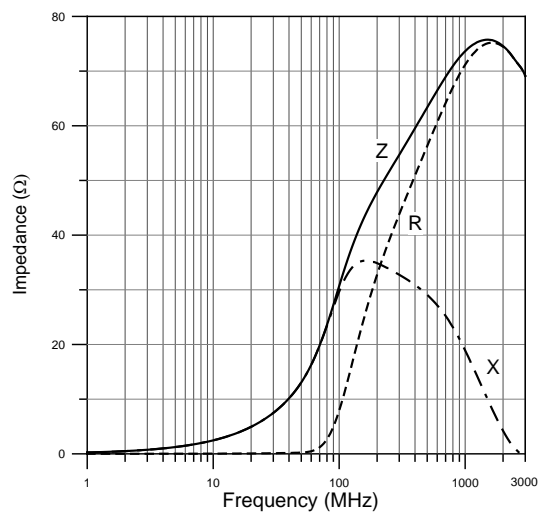
EBMS201209A152



EBMS201209B050



EBMS201209B300



Multilayer Ferrite Chip Bead (for Signal Line)

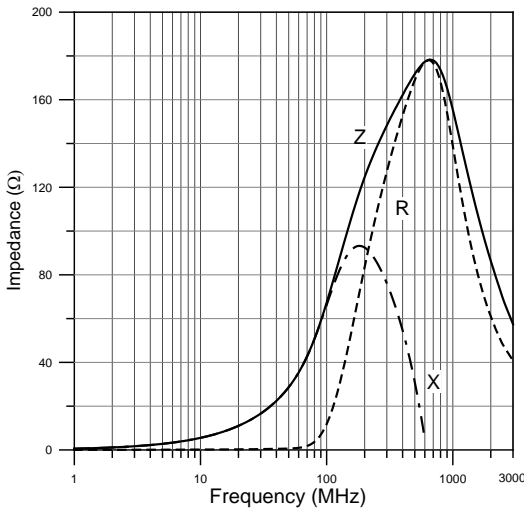
積層式鐵氧體晶片磁珠（訊號線用）

EBMS201209 (0805) TYPE 類型

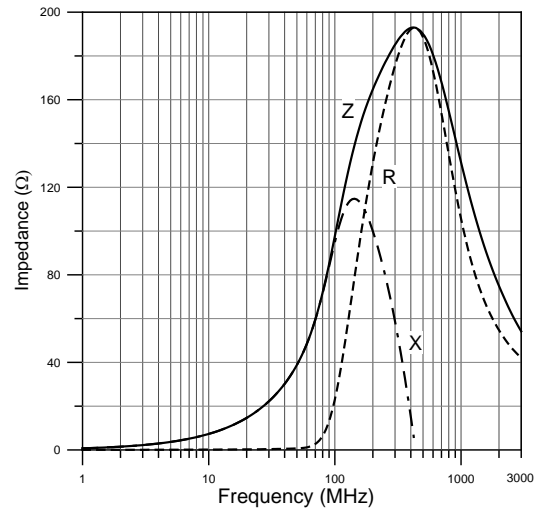
TYPICAL ELECTRICAL CHARACTERISTICS 典型電氣特性

Z, R, X vs. FREQUENCY CHARACTERISTICS 阻抗、電阻、感抗對頻率特性

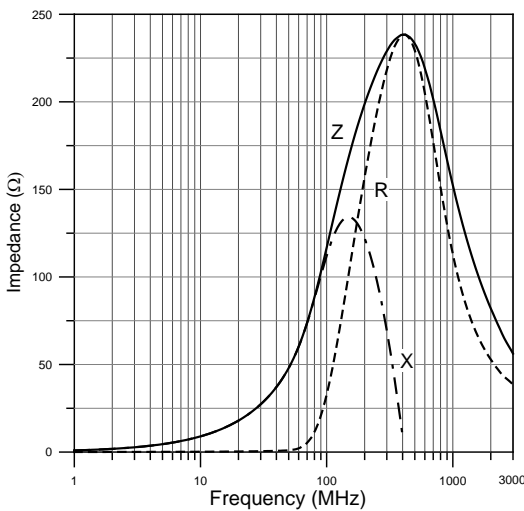
EBMS201209B600



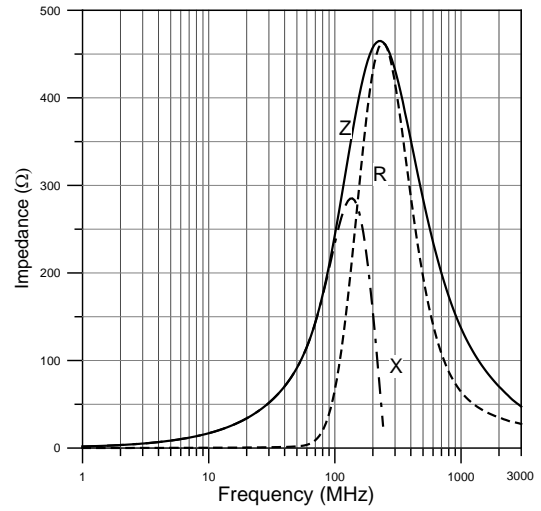
EBMS201209B101



EBMS201209B121



EBMS201209B221



Multilayer Ferrite Chip Bead (for Signal Line)

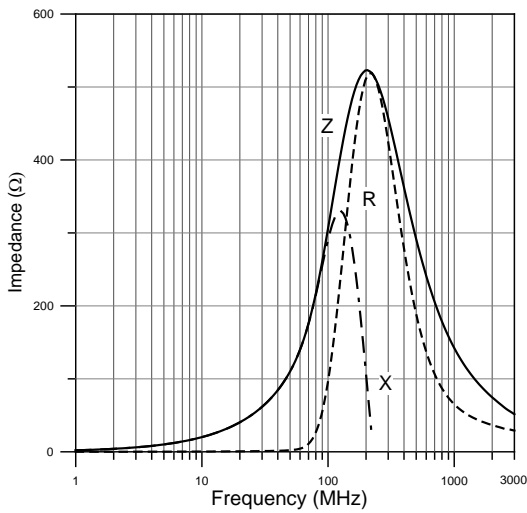
積層式鐵氧體晶片磁珠（訊號線用）

EBMS201209 (0805) TYPE 類型

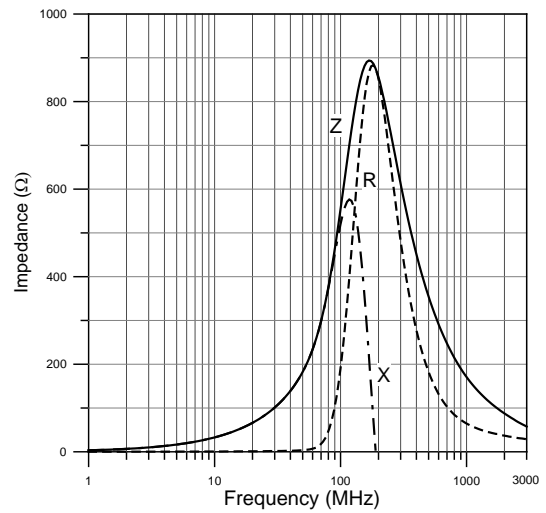
TYPICAL ELECTRICAL CHARACTERISTICS 典型電氣特性

Z, R, X vs. FREQUENCY CHARACTERISTICS 阻抗、電阻、感抗對頻率特性

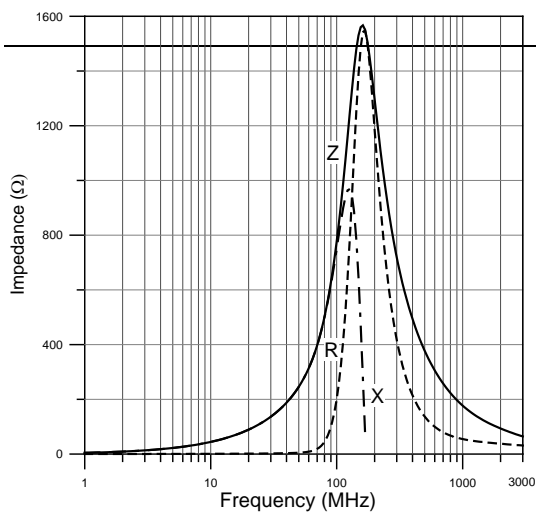
EBMS201209B301



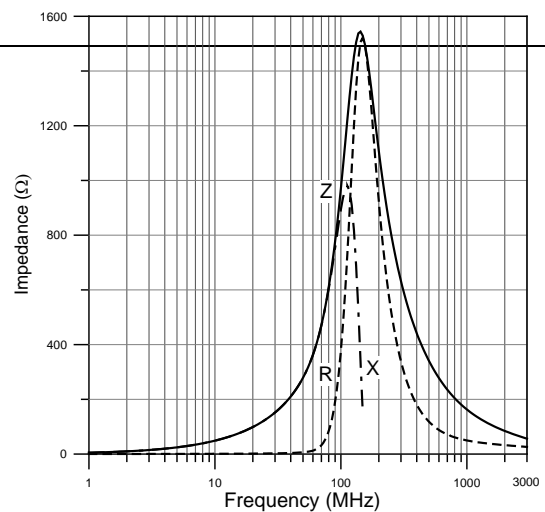
EBMS201209B601



EBMS201209B751



EBMS201209B102



Multilayer Ferrite Chip Bead (for Signal Line)

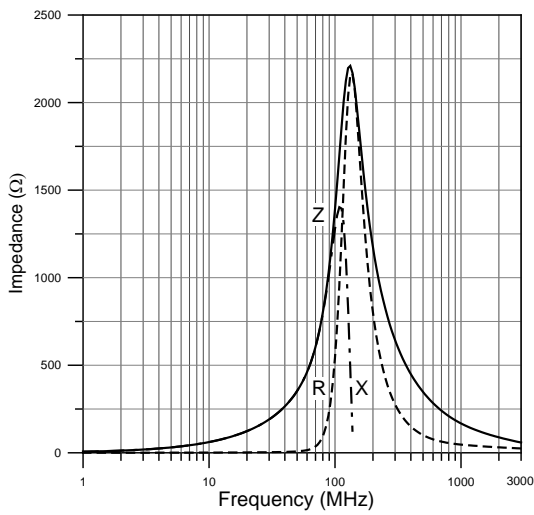
積層式鐵氧體晶片磁珠（訊號線用）

EBMS201209 (0805) TYPE 類型

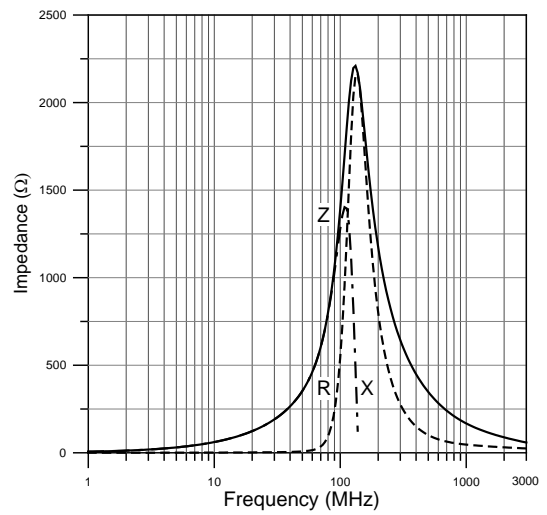
TYPICAL ELECTRICAL CHARACTERISTICS 典型電氣特性

Z, R, X vs. FREQUENCY CHARACTERISTICS 阻抗、電阻、感抗對頻率特性

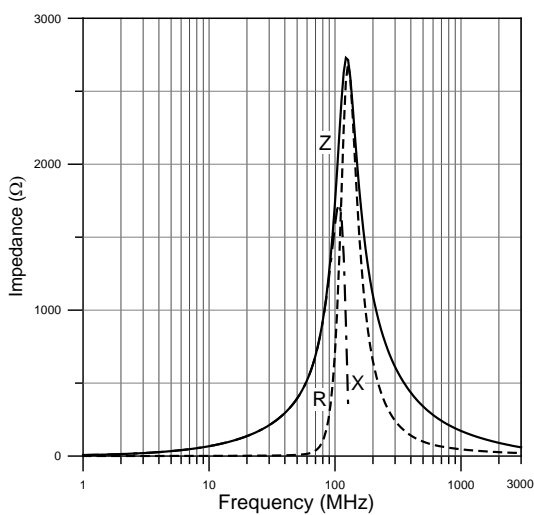
EBMS201209B102



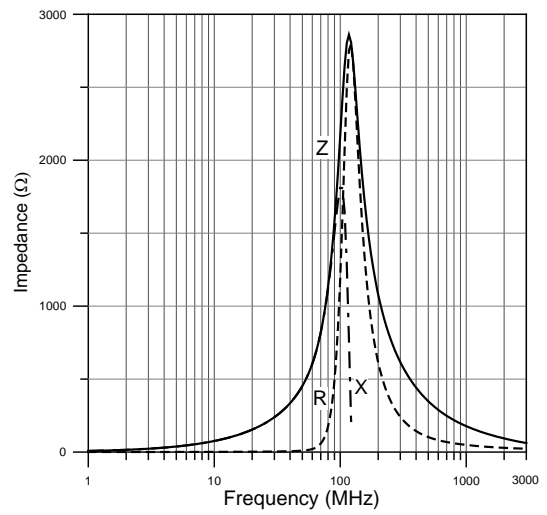
EBMS201209B152



EBMS201209B182



EBMS201209B222



Multilayer Ferrite Chip Bead (for Signal Line)

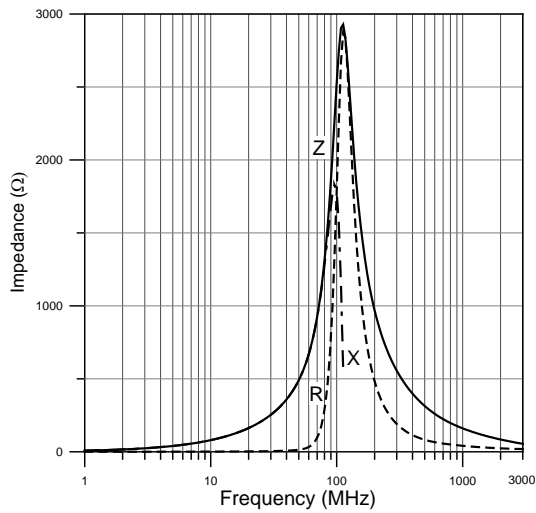
積層式鐵氧體晶片磁珠（訊號線用）

EBMS201209 (0805) TYPE 類型

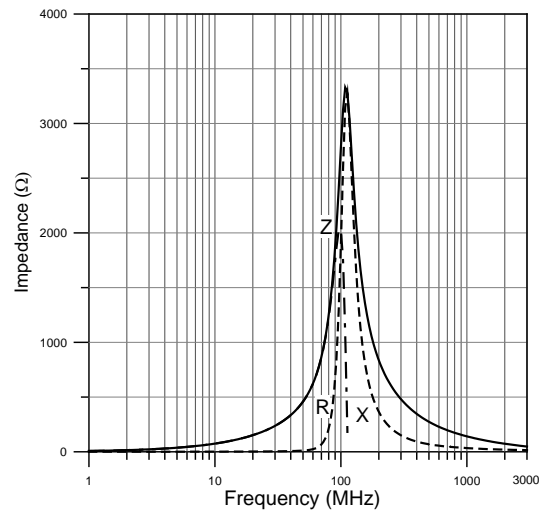
TYPICAL ELECTRICAL CHARACTERISTICS 典型電氣特性

Z, R, X vs. FREQUENCY CHARACTERISTICS 阻抗、電阻、感抗對頻率特性

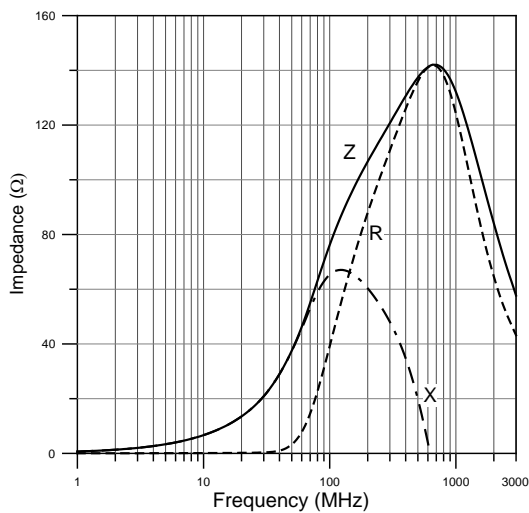
EBMS201209B252



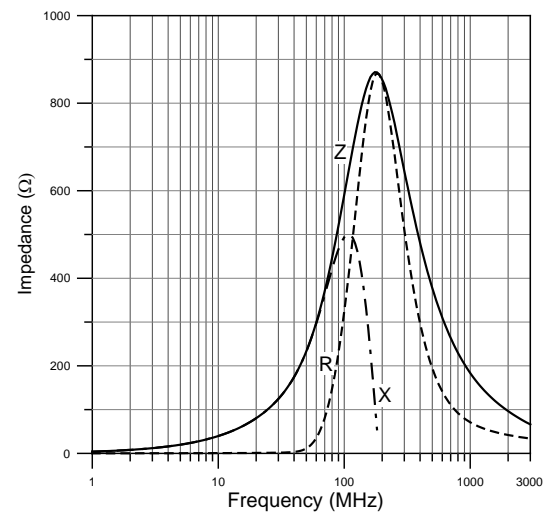
EBMS201209B272



EBMS201209K800



EBMS201209K601



Multilayer Ferrite Chip Bead (for Signal Line)

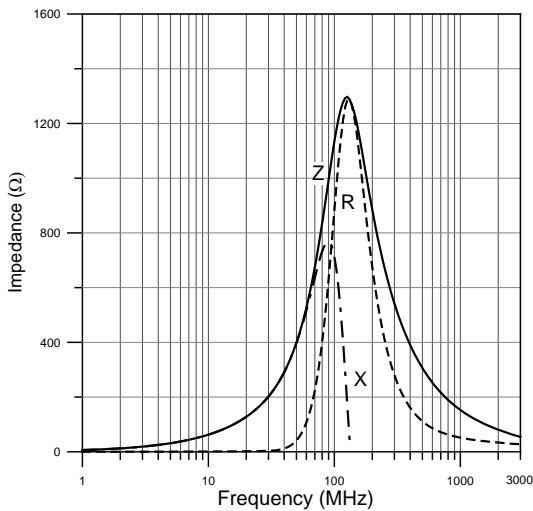
積層式鐵氧體晶片磁珠（訊號線用）

EBMS201209 (0805) TYPE 類型

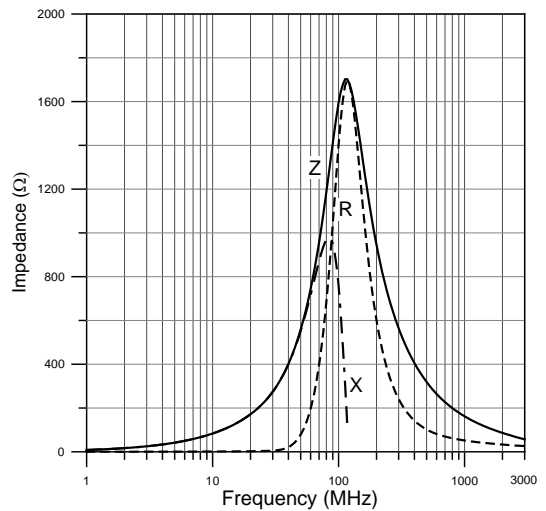
TYPICAL ELECTRICAL CHARACTERISTICS 典型電氣特性

Z, R, X vs. FREQUENCY CHARACTERISTICS 阻抗、電阻、感抗對頻率特性

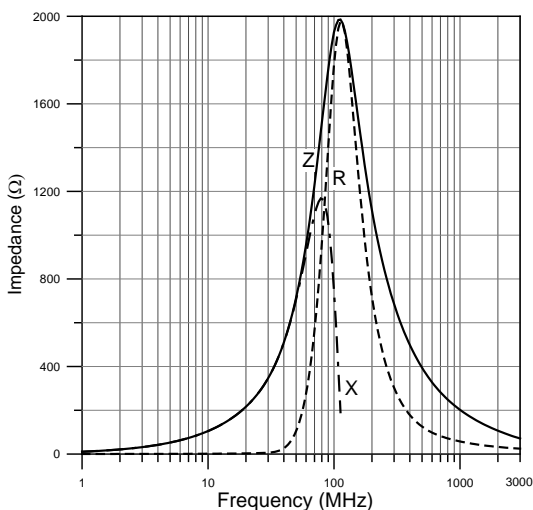
EBMS201209K102



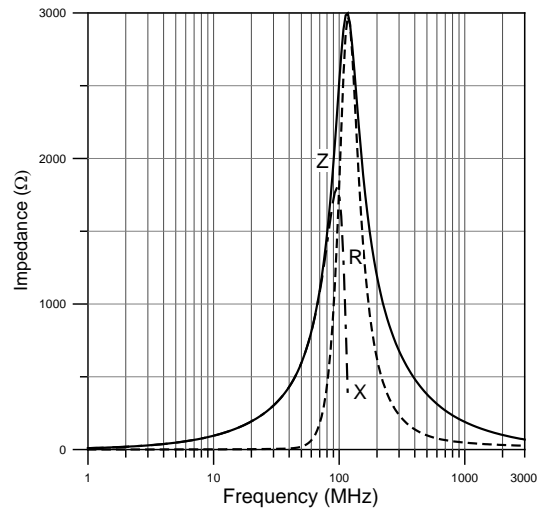
EBMS201209K152



EBMS201209K202



EBMS201209K252



Multilayer Ferrite Chip Bead (for Signal Line)

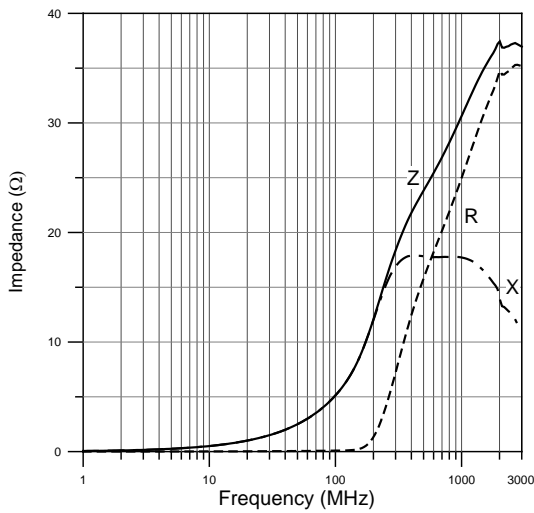
積層式鐵氧體晶片磁珠（訊號線用）

EBMS201209 (0805) TYPE 類型

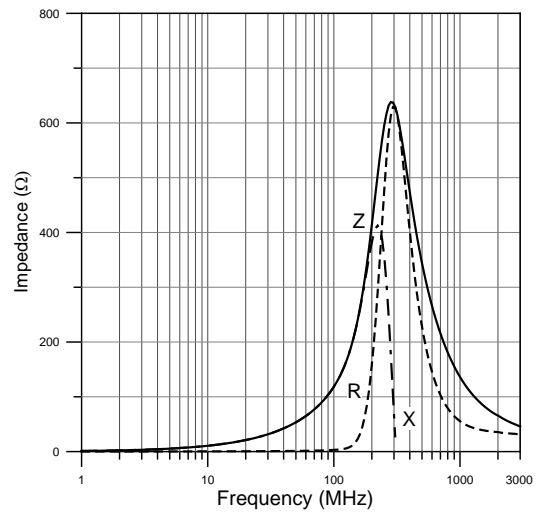
TYPICAL ELECTRICAL CHARACTERISTICS 典型電氣特性

Z, R, X vs. FREQUENCY CHARACTERISTICS 阻抗、電阻、感抗對頻率特性

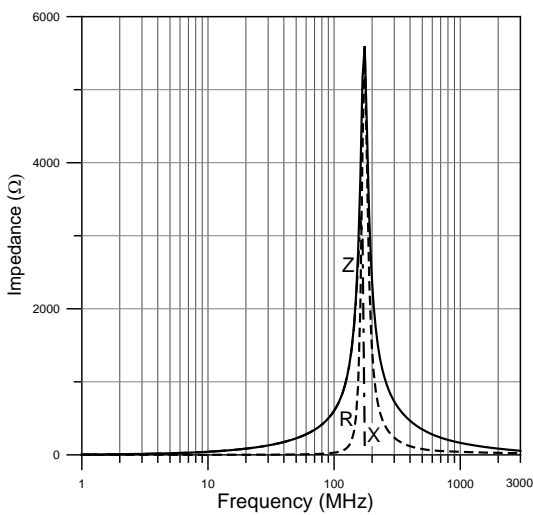
EBMS201209H050



EBMS201209H121



EBMS201209H601

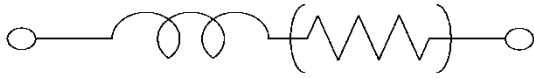


Multilayer Ferrite Chip Bead (for Signal Line)

積層式鐵氧體晶片磁珠（訊號線用）

EBMS321611 (1206) TYPE 類型

EQUIVALENT CIRCUIT DIAGRAM 等效電路圖



Electrical Characteristics 電氣特性

Part Number 產品料號	Impedance 阻抗 $\Omega \pm 25\%$ 歐姆 @ 100MHz	DC Resistance 直流電阻 Ω (Max.) 歐姆	Rated Current 耐電流 mA (Max.)
EBMS321611A260	26	0.10	800
EBMS321611A310	31	0.10	800
EBMS321611A520	52	0.15	800
EBMS321611A600	60	0.15	500
EBMS321611A700	70	0.15	500
EBMS321611A101	100	0.20	450
EBMS321611A121	120	0.20	450
EBMS321611A151	150	0.20	450
EBMS321611A221	220	0.2	350
EBMS321611A301	300	0.20	350
EBMS321611A401	400	0.25	350
EBMS321611A601	600	0.25	350
EBMS321611A751	750	0.30	350
EBMS321611A102	1000	0.35	350
EBMS321611A152	1500	0.40	350
EBMS321611A182	1800	0.40	350
EBMS321611B190	19	0.10	500
EBMS321611B310	31	0.15	500
EBMS321611B600	60	0.20	500
EBMS321611B101	100	0.25	300
EBMS321611B121	120	0.25	300
EBMS321611B201	200	0.25	300
EBMS321611B301	300	0.30	300

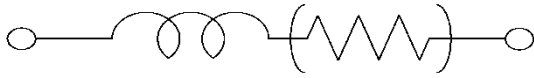
* TEST EQUIPMENT: E4991A IMPEDANCE ANALYZER 量測儀器：E4991A 阻抗分析儀

Multilayer Ferrite Chip Bead (for Signal Line)

積層式鐵氧體晶片磁珠（訊號線用）

EBMS321611 (1206) TYPE 類型

EQUIVALENT CIRCUIT DIAGRAM 等效電路圖



Electrical Characteristics 電氣特性

Part Number 產品料號	Impedance 阻抗 $\Omega \pm 25\%$ 歐姆 @ 100MHz	DC Resistance 直流電阻 Ω (Max.) 歐姆	Rated Current 耐電流 mA (Max.)
EBMS321611B601	600	0.35	300
EBMS321611B751	750	0.35	300
EBMS321611B102	1000	0.40	200
EBMS321611B152	1500	0.45	200
EBMS321611B202	2000	0.45	200
EBMS321611DB202	2000 (at 30MHz)	0.60	200
EBMS321611K601	600	0.50	200
EBMS321611K102	1000	0.70	200
EBMS321611K122	1200	0.70	200
EBMS321611H050	5	0.07	500
EBMS321611H070	7	0.07	500
EBMS321611H301	300	0.30	300
EBMS321611H601	600	0.45	300

* TEST EQUIPMENT: E4991A IMPEDANCE ANALYZER 量測儀器：E4991A 阻抗分析儀

Multilayer Ferrite Chip Bead (for Signal Line)

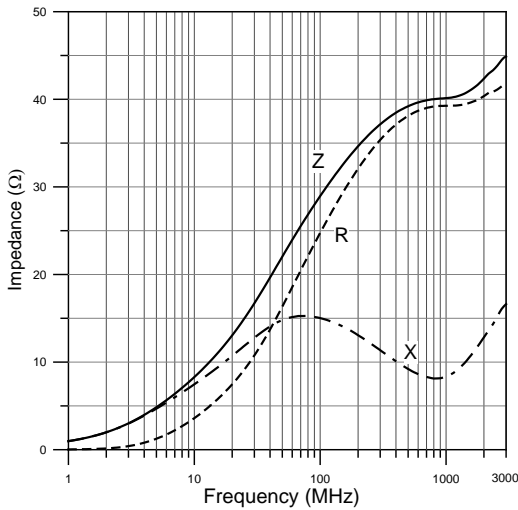
積層式鐵氧體晶片磁珠（訊號線用）

EBMS321611 (1206) TYPE 類型

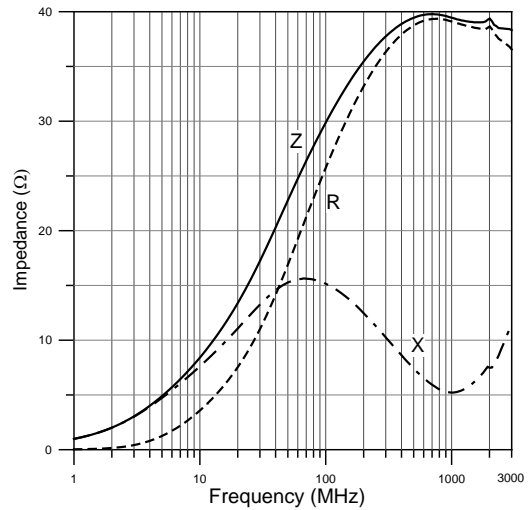
TYPICAL ELECTRICAL CHARACTERISTICS 典型電氣特性

Z, R, X vs. FREQUENCY CHARACTERISTICS 阻抗、電阻、感抗對頻率特性

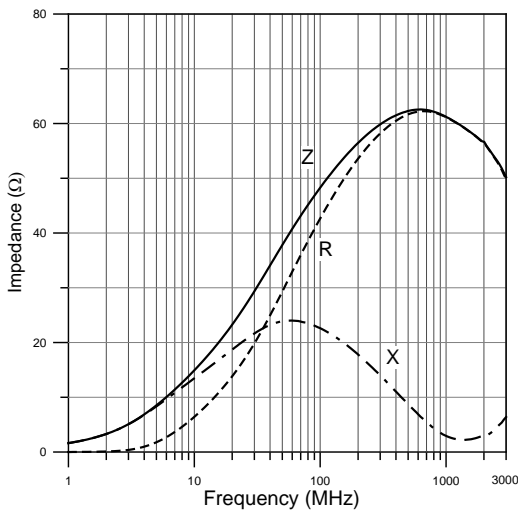
EBMS321611A260



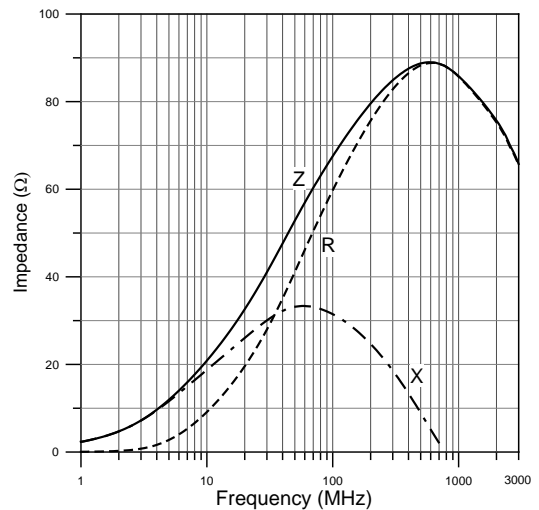
EBMS321611A310



EBMS321611A520



EBMS321611A700



Multilayer Ferrite Chip Bead (for Signal Line)

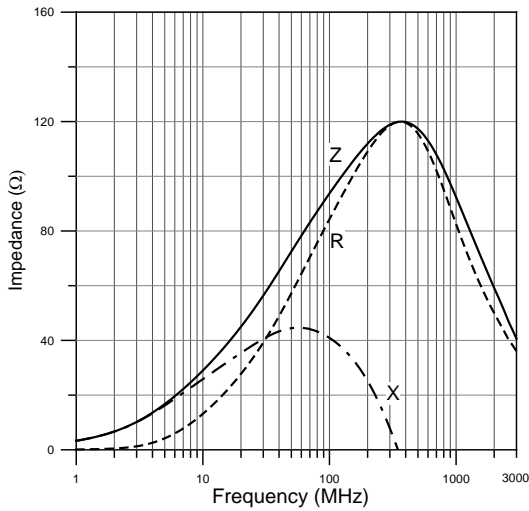
積層式鐵氧體晶片磁珠（訊號線用）

EBMS321611 (1206) TYPE 類型

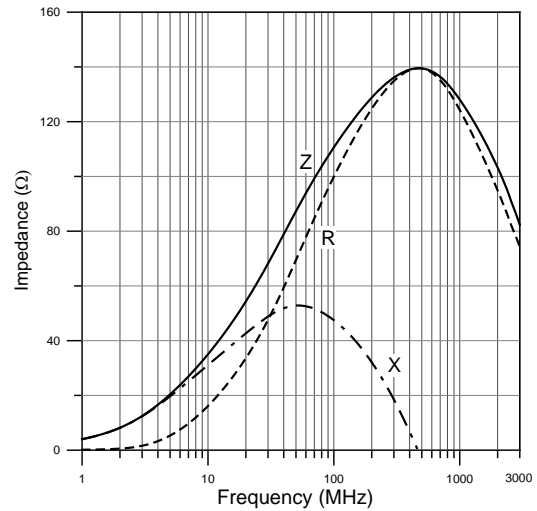
TYPICAL ELECTRICAL CHARACTERISTICS 典型電氣特性

Z, R, X vs. FREQUENCY CHARACTERISTICS 阻抗、電阻、感抗對頻率特性

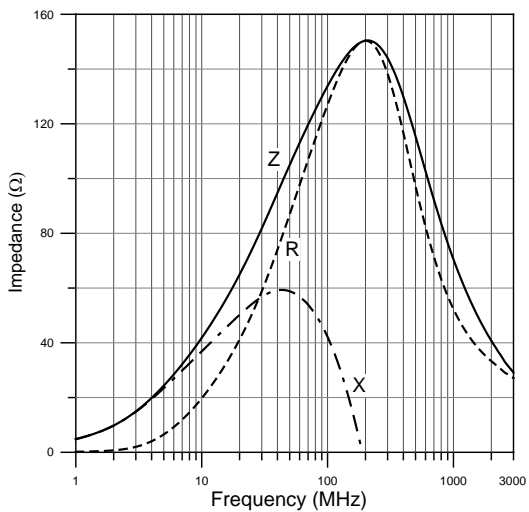
EBMS321611A101



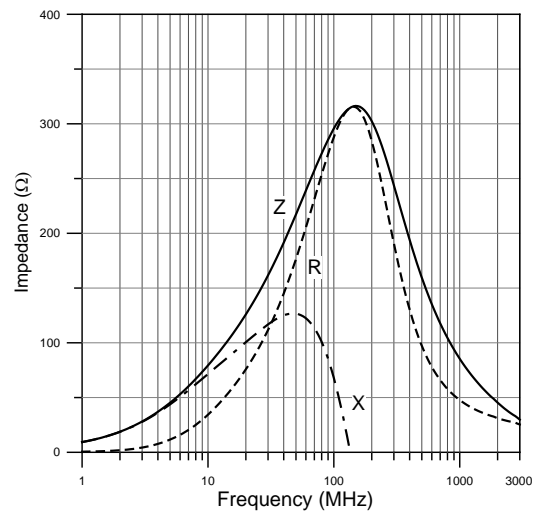
EBMS321611A121



EBMS321611A151



EBMS321611A301



Multilayer Ferrite Chip Bead (for Signal Line)

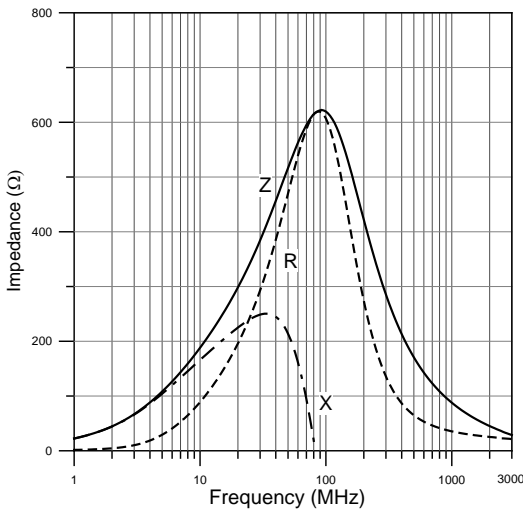
積層式鐵氧體晶片磁珠（訊號線用）

EBMS321611 (1206) TYPE 類型

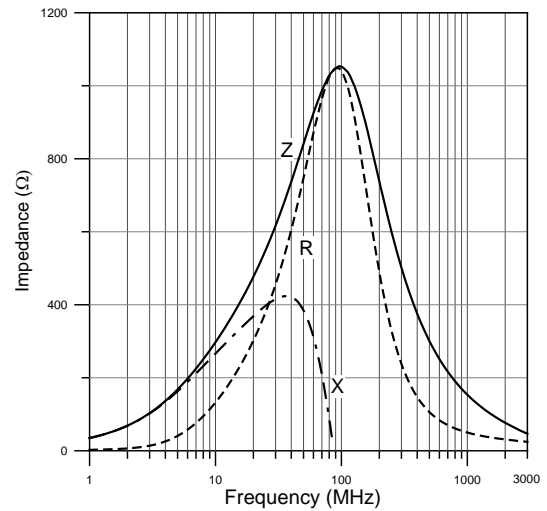
TYPICAL ELECTRICAL CHARACTERISTICS 典型電氣特性

Z, R, X vs. FREQUENCY CHARACTERISTICS 阻抗、電阻、感抗對頻率特性

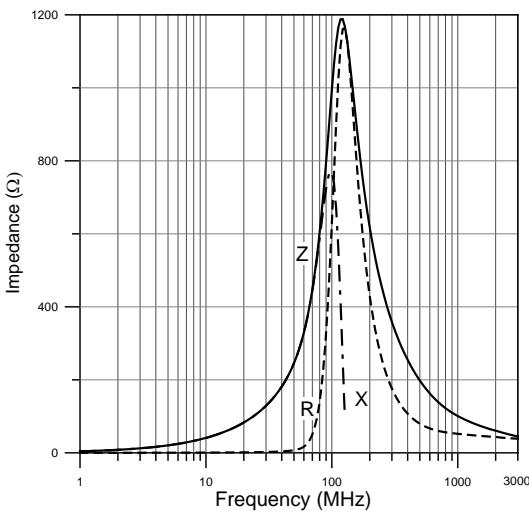
EBMS321611A601



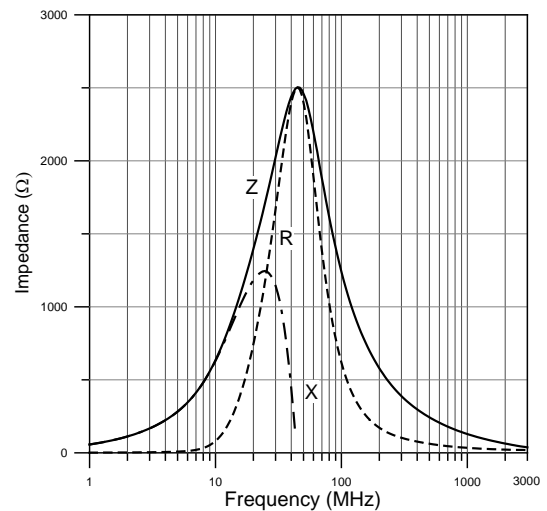
EBMS321611A102



EBMS321611B102



EBMS321611DB202

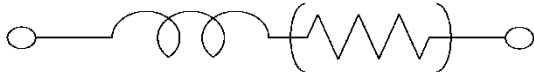


Multilayer Ferrite Chip Bead (for Signal Line)

積層式鐵氧體晶片磁珠（訊號線用）

EBMS322513 (1210) TYPE 類型

EQUIVALENT CIRCUIT DIAGRAM 等效電路圖

**Electrical Characteristics 電氣特性**

Part Number 產品料號	Impedance 阻抗 $\Omega \pm 25\%$ 歐姆 @ 100MHz	DC Resistance 直流電阻 Ω (Max.) 歐姆	Rated Current 耐電流 mA (Max.)
EBMS322513A310	31	0.10	500
EBMS322513A520	52	0.30	400
EBMS322513A600	60	0.30	400
EBMS322513B310	31	0.10	500

* TEST EQUIPMENT: E4991A IMPEDANCE ANALYZER 量測儀器：E4991A 阻抗分析儀

Multilayer Ferrite Chip Bead (for Signal Line)

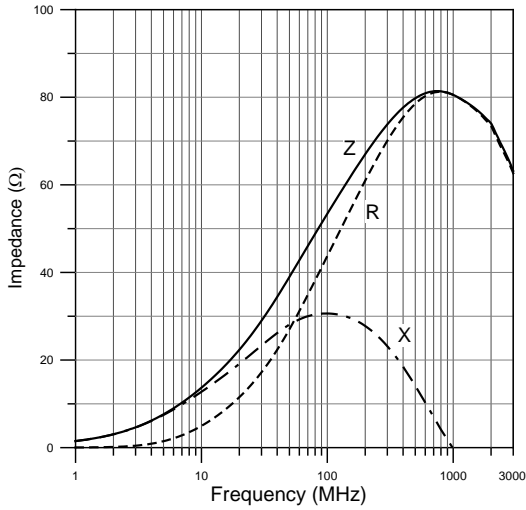
積層式鐵氧體晶片磁珠（訊號線用）

EBMS322513 (1210) TYPE 類型

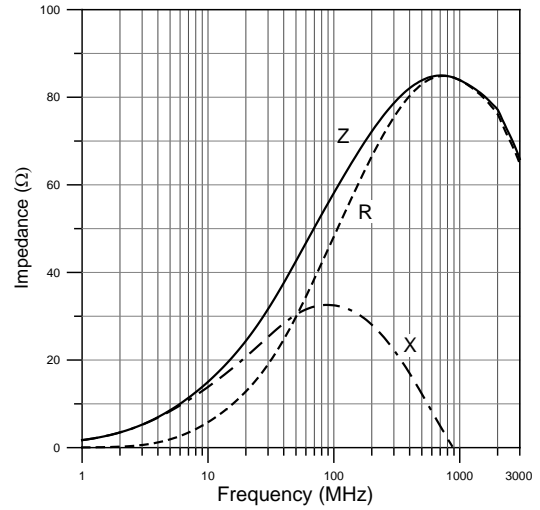
TYPICAL ELECTRICAL CHARACTERISTICS 典型電氣特性

Z, R, X vs. FREQUENCY CHARACTERISTICS 阻抗、電阻、感抗對頻率特性

EBMS322513A520



EBMS322513A600

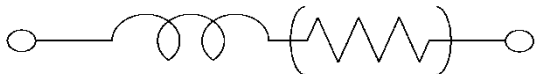


Multilayer Ferrite Chip Bead (for Signal Line)

積層式鐵氧體晶片磁珠（訊號線用）

EBMS451616 (1806) TYPE 類型

EQUIVALENT CIRCUIT DIAGRAM 等效電路圖



Electrical Characteristics 電氣特性

Part Number 產品料號	Impedance 阻抗 $\Omega \pm 25\%$ 歐姆 @ 100MHz	DC Resistance 直流電阻 Ω (Max.) 歐姆	Rated Current 耐電流 mA (Max.)
EBMS451616A600	60	0.20	500
EBMS451616A800	80	0.30	400
EBMS451616A101	100	0.30	400
EBMS451616A151	150	0.50	200
EBMS451616A601	600	0.80	200

* TEST EQUIPMENT: E4991A IMPEDANCE ANALYZER 量測儀器：E4991A 阻抗分析儀

Multilayer Ferrite Chip Bead (for Signal Line)

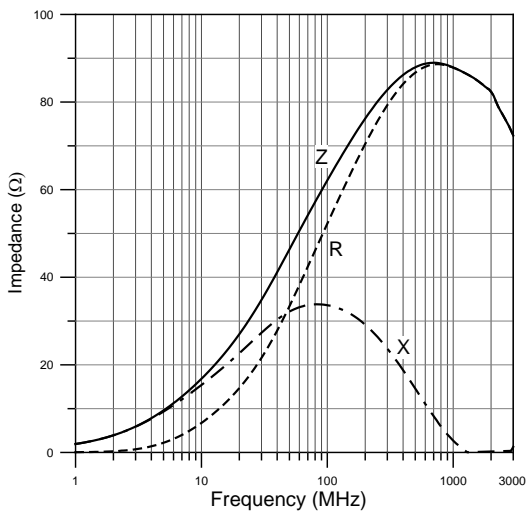
積層式鐵氧體晶片磁珠（訊號線用）

EBMS451616 (1806) TYPE 類型

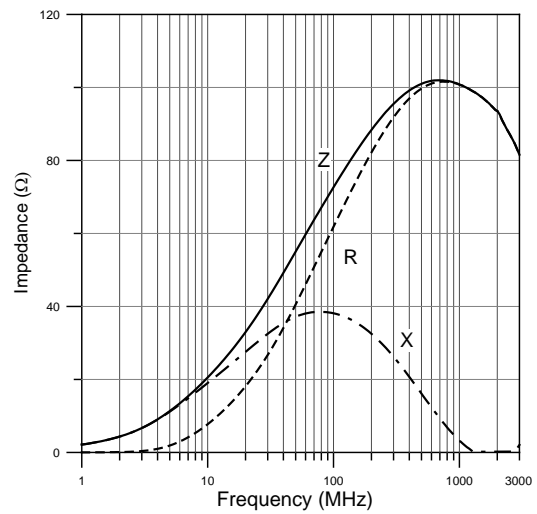
TYPICAL ELECTRICAL CHARACTERISTICS 典型電氣特性

Z, R, X vs. FREQUENCY CHARACTERISTICS 阻抗、電阻、感抗對頻率特性

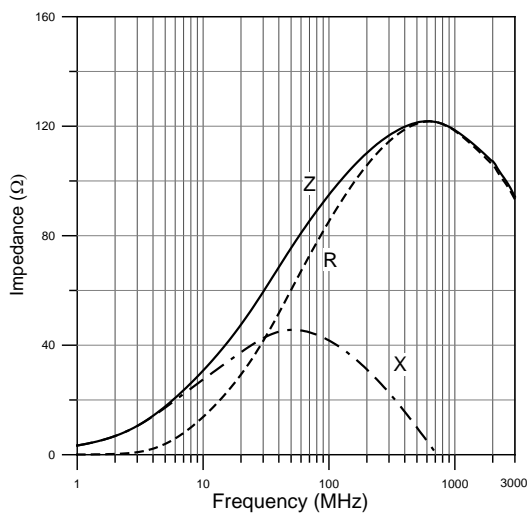
EBMS451616A600



EBMS451616A800



EBMS451616A101

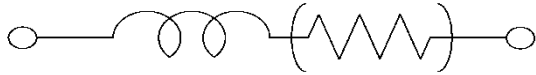


Multilayer Ferrite Chip Bead (for Signal Line)

積層式鐵氧體晶片磁珠（訊號線用）

EBMS453215 (1812) TYPE 類型

EQUIVALENT CIRCUIT DIAGRAM 等效電路圖



Electrical Characteristics 電氣特性

Part Number 產品料號	Impedance 阻抗 $\Omega \pm 25\%$ 歐姆 @ 100MHz	DC Resistance 直流電阻 Ω (Max.) 歐姆	Rated Current 耐電流 mA (Max.)
EBMS453215A310	31	0.10	500
EBMS453215A600	60	0.20	500
EBMS453215A121	120	0.20	500
EBMS453215A151	150	0.20	500
EBMS453215B700	70	0.20	500

* TEST EQUIPMENT: E4991A IMPEDANCE ANALYZER 量測儀器：E4991A 阻抗分析儀

Multilayer Ferrite Chip Bead (for Signal Line)

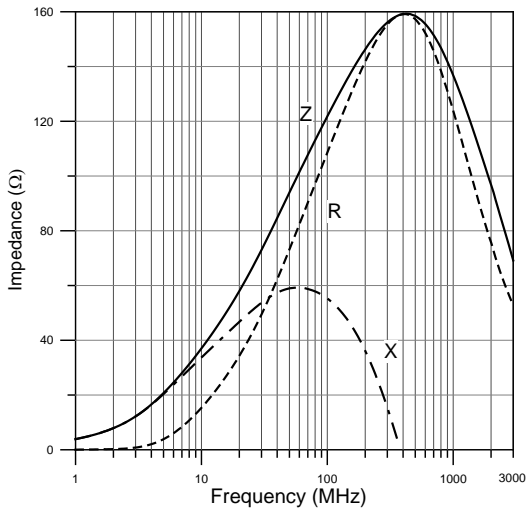
積層式鐵氧體晶片磁珠（訊號線用）

EBMS453215 (1812) TYPE 類型

TYPICAL ELECTRICAL CHARACTERISTICS 典型電氣特性

Z, R, X vs. FREQUENCY CHARACTERISTICS 阻抗、電阻、感抗對頻率特性

EBMS453215A121



EBMS453215A151

